

# MARYLAND

## Voluntary Market



**PURE PREMIUMS and RATING VALUES  
PROPOSED EFFECTIVE NOVEMBER 1, 2003**



**© 2003 National Council on Compensation Insurance, Inc.**

The enclosed materials are copyrighted materials of the National Council on Compensation Insurance, Inc. ("NCCI") The use of these materials may be governed by a separate contractual agreement between NCCI and its licensees such as an affiliation agreement between you and NCCI. Unless permitted by NCCI, you may not copy, create derivative works, (by way of example, create or supplement your own works, databases, software, publications, manuals, or other materials) display, perform, or use the materials, in whole or in part, in any media. Such actions taken by you, or by your direction, may be in violation of federal copyright and other commercial laws. NCCI does not permit or acquiesce such use of its materials. In the event such use is contemplated or desired, please contact NCCI's Legal Department for permission.

**TABLE OF CONTENTS**

|  |                  |
|--|------------------|
| <b><i>BACKGROUND AND FILING PROCEDURE</i></b>                | <b><i>1</i></b>  |
| <b><i>SUMMARY OF PROPOSED CHANGE IN LOSS COSTS</i></b>       | <b><i>2</i></b>  |
| <b><i>KEY COMPONENT – EXPERIENCE, TREND AND BENEFITS</i></b> | <b><i>3</i></b>  |
| <b>EXPERIENCE</b>  | <b>3</b>         |
| <b>TREND</b>   | <b>4</b>         |
| <b>BENEFITS</b>  | <b>11</b>        |
| <br>   |                  |
| <b><i>CONCLUSION</i></b>                                     | <b><i>12</i></b> |
| <br>   |                  |
| <b><i>EXHIBITS</i></b>                                       | <b><i>13</i></b> |
| <b>HISTORICAL LOSS COST CHANGES</b>                          | <b>13</b>        |
| <b>RECENT KEY LEGISLATION</b>                                | <b>14</b>        |
| <b>MARYLAND WRITTEN PREMIUM</b>                              | <b>16</b>        |
| <b>MARYLAND LARGEST WORKERS COMP WRITERS</b>                 | <b>17</b>        |
| <br>   |                  |
| <b><i>PROPOSED LOSS COSTS AND RATING VALUES</i></b>          |                  |
| <br>   |                  |
| <b><i>NCCI KEY CONTACTS</i></b>                              |                  |
| <br>   |                  |
| <b><i>APPENDIX – NCCI AFFILIATES</i></b>                     |                  |

## **BACKGROUND AND FILING PROCEDURE**

The workers compensation benefit system in Maryland is designed to cover medical costs associated with workplace injuries, as well as provide wage replacement (indemnity) benefits to injured workers for lost work time.

The National Council on Compensation Insurance, Inc. (NCCI) collects an extensive amount of information regarding the workers compensation system in Maryland, and submits proposed advisory prospective loss costs for review and approval by the Maryland Commissioner of Insurance. These advisory prospective loss costs are intended to cover the indemnity and medical benefits provided under the system. They do not, however, contemplate any other costs associated with providing workers compensation insurance (such as commissions, taxes, etc.), or the expenses associated with providing these benefits (loss adjustment expenses).

Each insurance company offering workers compensation insurance in Maryland must file a loss cost multiplier to be applied to the approved advisory prospective loss costs in order to compute the final workers compensation rates that they intend to charge. This multiplier is intended to cover the other costs associated with providing workers compensation insurance that are not already part of the advisory prospective loss costs. Alternatively, insurance companies may opt to not adopt these loss costs and make an independent filing instead.

In this filing, NCCI is proposing that the Commissioner of Insurance approves a 4.7% decrease in the current loss costs (which went into effect on January 1, 2003), and that the new loss costs take effect on November 1, 2003. This document will explain why this decrease is necessary.

NCCI separately determines loss costs for each workers compensation classification. In this filing, the actual change from the current loss cost is different depending on the classification. In fact, the loss costs for some classifications would increase if this filing is approved.

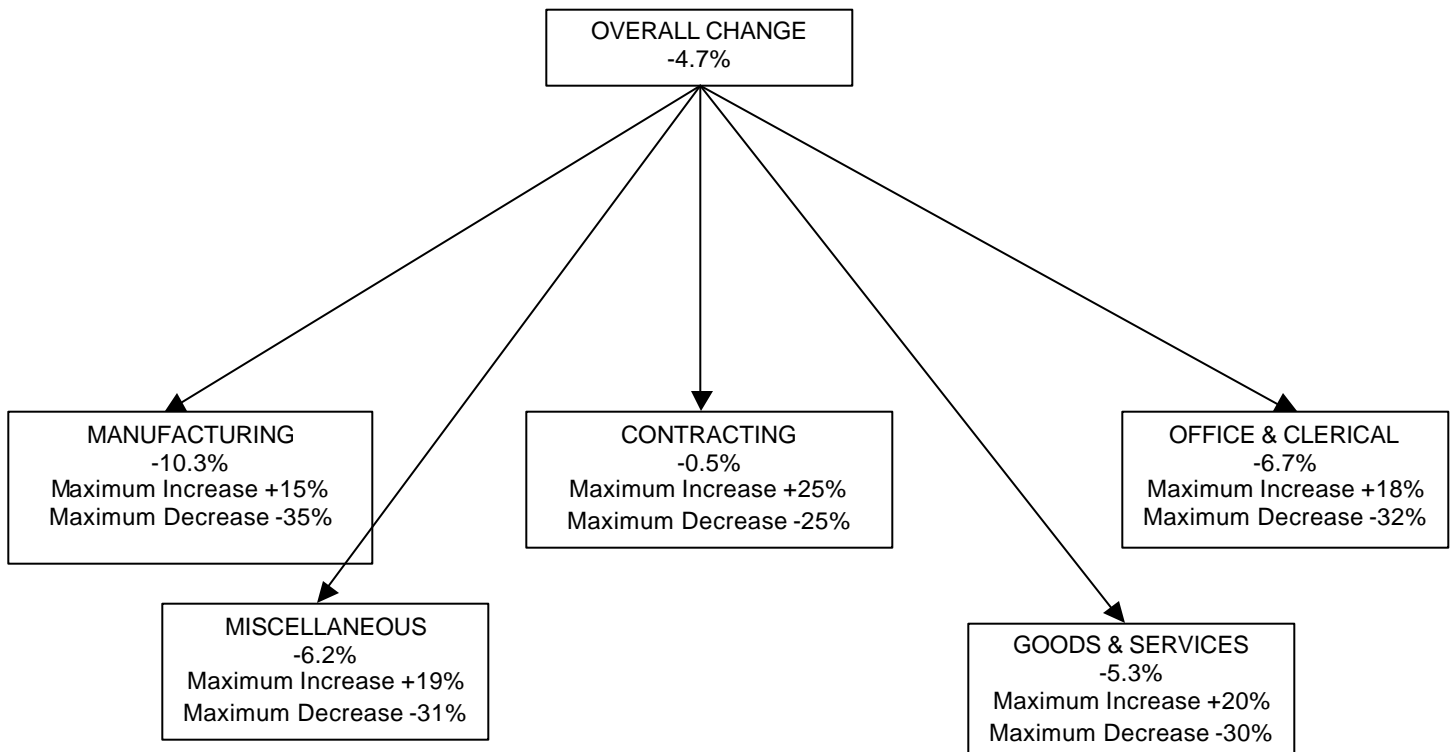
Employers unable to secure coverage in the voluntary market can apply for such coverage from the Injured Workers' Insurance Fund in Maryland.

**SUMMARY OF PROPOSED CHANGE IN LOSS COSTS**

| <u>Key Components</u>                                       | <u>Percentage Change</u> |
|---|--------------------------|
| Experience, Trend and Benefits                              | -9.4%                    |
| Impact of Attorney fee Change                               | +3.1%                    |
| Impact of <u>Harris vs. Board of Educ. of Howard County</u> | +2.0%                    |
| <b>Overall Change Requested</b>                             | <b>-4.7%</b>             |

A brief discussion of each of these key components follows this page.

The change in loss costs varies depending on the classification. Each classification belongs to one of five industry groups. The average change proposed for each of these five groups is displayed below, as well as the largest increase and largest decrease possible for a classification in each of those groups.



## KEY COMPONENT – EXPERIENCE, TREND AND BENEFITS

This key component has three main parts.

### **EXPERIENCE**

NCCI reviewed the emerging experience of Maryland workers compensation policies in recent years. The primary focus of our review was on premiums and losses from Policy Years 2000 and 2001, evaluated as of December 31, 2002. A policy year captures the premiums and losses from the block of policies that have effective dates during a given year. Policy Year 2001 is the most recently available policy year, since the last policy had an effective date of December 31, 2001 and did not expire until December 31, 2002. The use of the two most recently available policy years is consistent with the filings made in the past several years by NCCI in Maryland.

Calendar-Accident Year 2002 experience was also examined for the purposes of this filing. A calendar-accident year captures the premiums earned during a given year, together with the losses associated with workplace accidents taking place during the same year. This information is useful in analyzing whether the pattern observed in recent years can be expected to continue in the same direction into future time periods.

It should be noted that NCCI adjusts the historical policy and calendar-accident year experience to reflect both loss cost changes approved and statutory benefit changes implemented since that time period.

The specific loss experience used by NCCI in this filing is paid which is benefit amounts already paid by insurers on reported claims. The use of paid loss experience is also consistent with NCCI's filings in the past several years in Maryland.

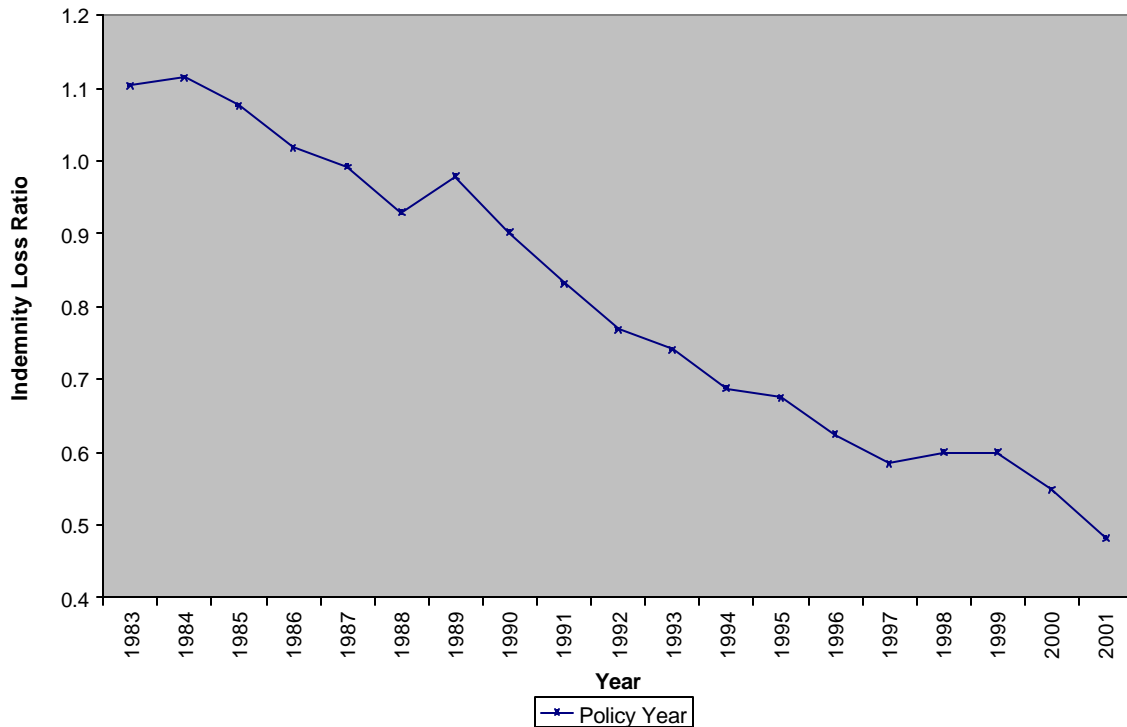
From these losses, NCCI has computed loss development factors. They are needed since there is substantial lag between the time a claim is reported and the time the claim is finally settled. The factors are based on how pattern of loss payments changed over time for claims from older years. In the 11/01/2003 filing, NCCI relied on the average change in paid estimates over the last three years from the first report to the nineteenth report. The loss development factor from 19th report to ultimate, herein called the tail factor, has been selected based on five years average excluding high and low.

**TREND**

As noted above, the filing relies primarily on the experience from Policy Years 2000 and 2001. However, the proposed loss costs are intended for use with policies with effective dates starting on November 1, 2003. Therefore, it is necessary to use trend factors that forecast how much the future Maryland workers compensation experience will differ from the past. These trend factors measure anticipated changes in the amount of indemnity and medical benefits as compared to anticipated changes in the amount of workers' wages. For example, if benefit costs are expected to grow faster than wages, then a trend factor greater than zero should be applied. Conversely, if wages are expected to grow faster than benefit costs, then a trend factor less than zero is indicated.

The chart below shows the history of indemnity loss ratios for the past 19 years. An indemnity loss ratio represents the proportion of premium dollars that are necessary to cover indemnity benefits (the figures in the chart reflect premiums at today's loss costs and losses at today's statutory benefit levels).

**Maryland Indemnity Loss Ratio History**

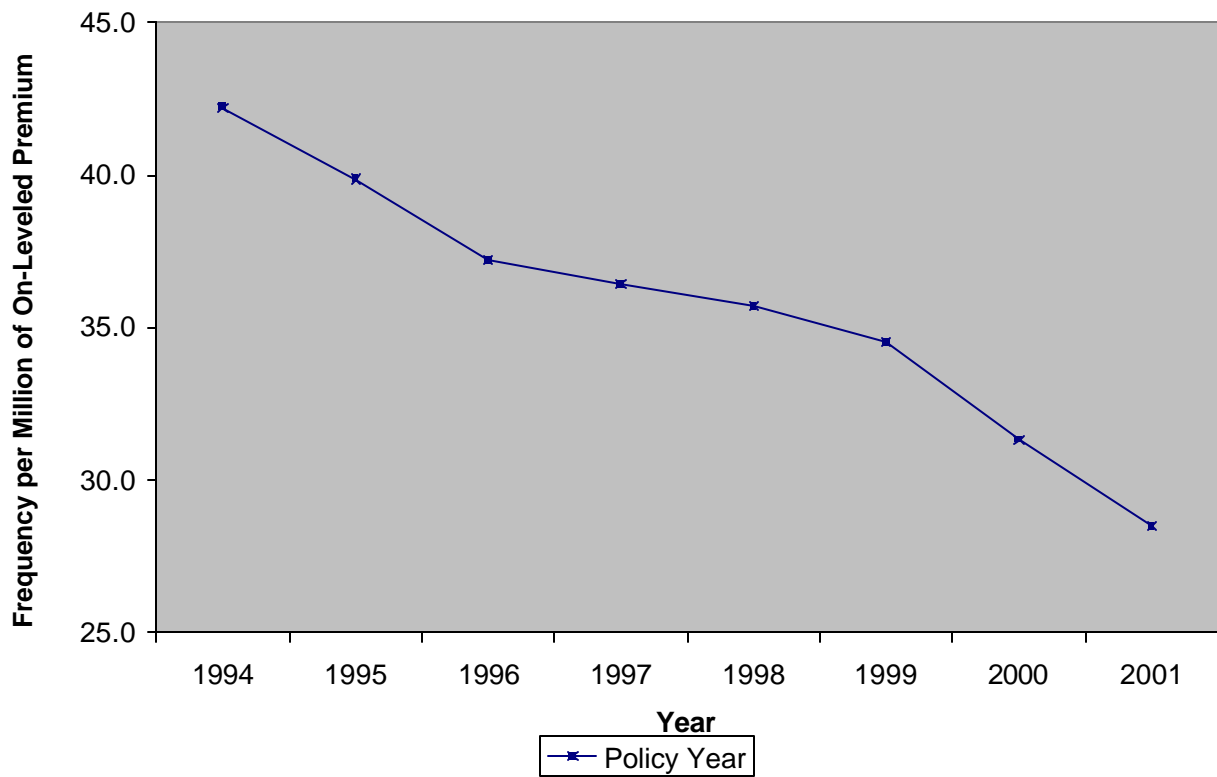


Maryland's indemnity loss ratio continued to decline in policy year 2001.

## Maryland

Underlying these loss ratios are the number of workplace injuries (claim frequency) and the average cost of each of these injuries. The chart below summarizes the recent history of lost-time claims (i.e., those claims where a worker missed work time due to a workplace injury) in Maryland.

### Maryland Frequency

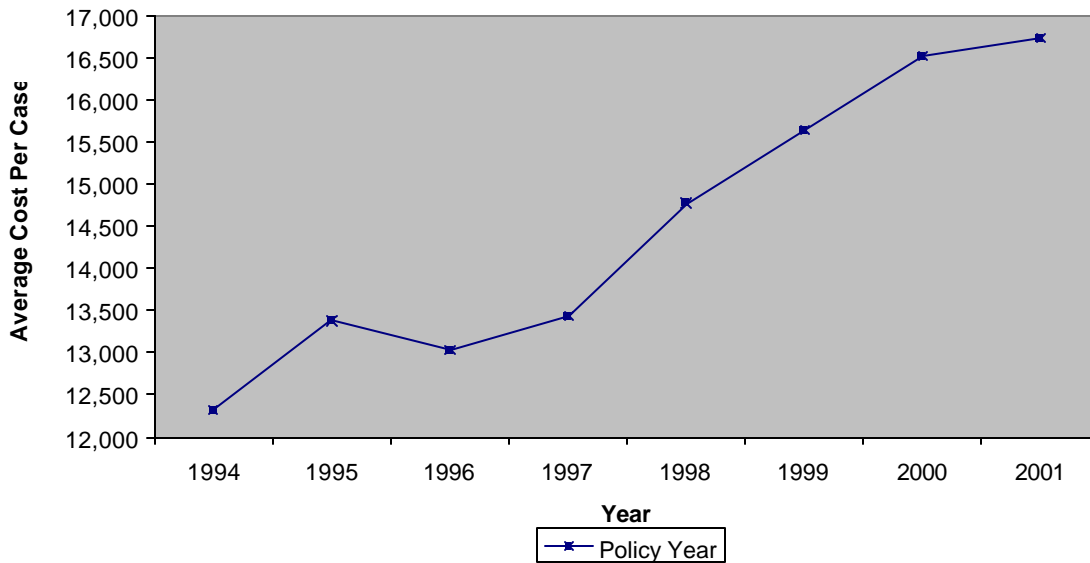


Maryland claim frequency continued to decline in policy year 2001.

## Maryland

For these workplace injuries, the average indemnity cost over time can be tracked by observing the following chart.

### Maryland Indemnity Cost Per Case

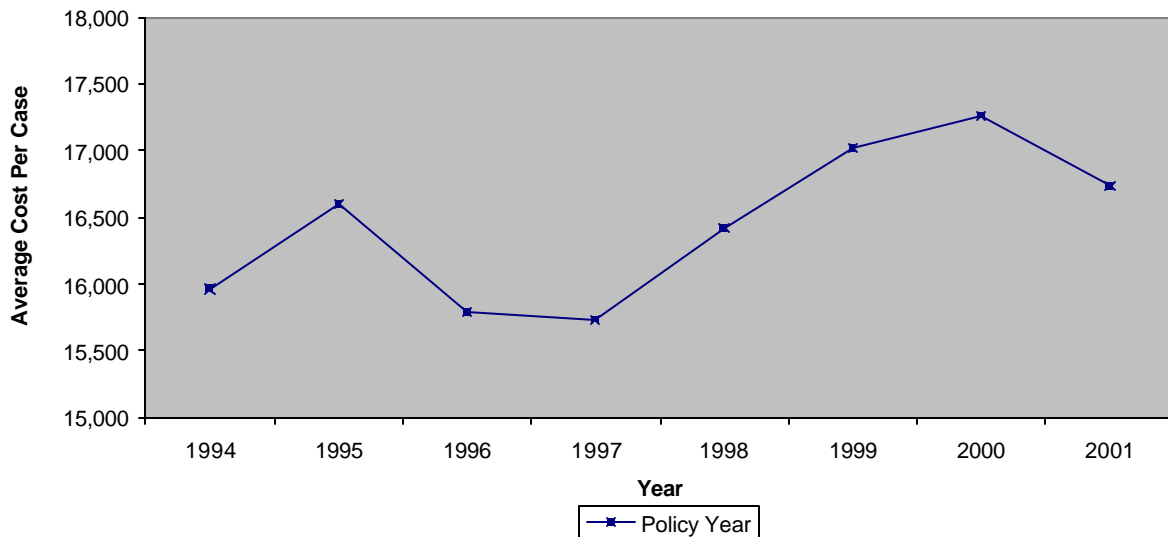


Indemnity average cost per case experienced a modest increase in policy year 2001, its fifth consecutive year of increase.

## Maryland

After removing the impact of the growth in workers wages that occurred over this time period, the average indemnity cost per case in excess of wage growth is shown in the following chart.

### Maryland Indemnity Cost Per Case



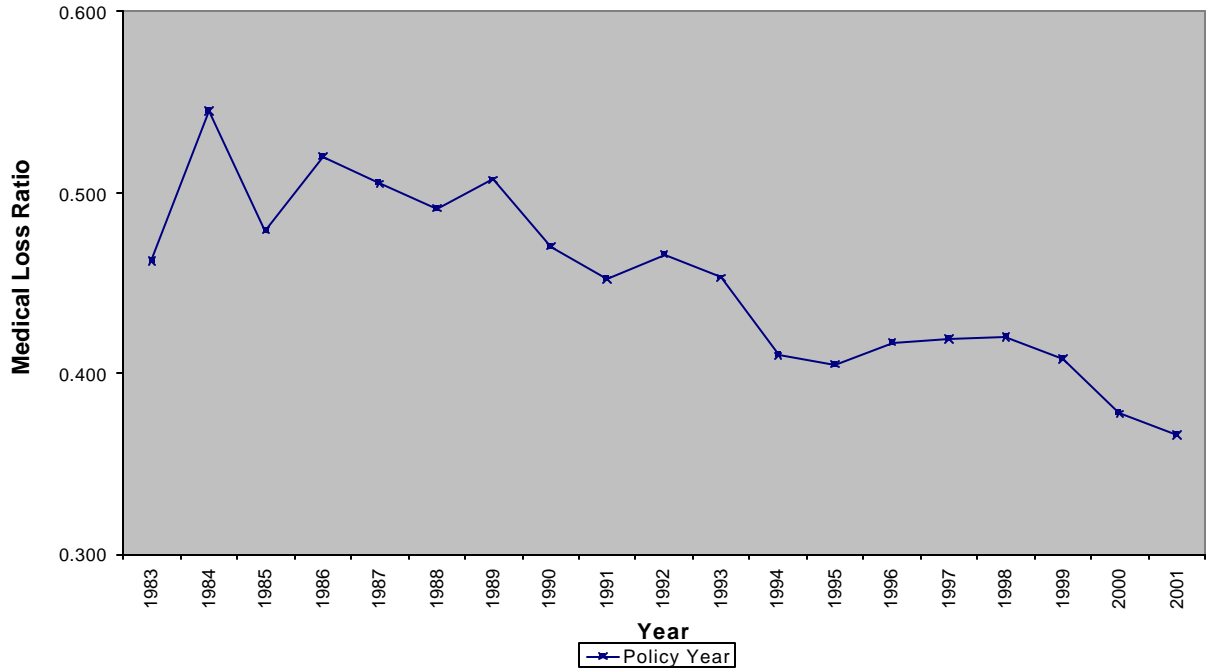
After 3 consecutive years of increases, Maryland's indemnity average cost per case (in excess of wage growth) showed a decline in the latest policy year. However, early indications from accident year 2002 show an average indemnity cost per case that is comparable to the policy year 2000 level.

In last year's Maryland filing, NCCI proposed an indemnity trend factor of -1% per year. Based on our analysis this year, we are proposing an indemnity trend factor of -1% per year. This means that indemnity benefits are expected to increase at a slower pace than workers' wages.

## Maryland

On the medical side of benefits, the chart below shows the history of medical loss ratios for the past 19 years.

**Maryland Medical Loss Ratio History**

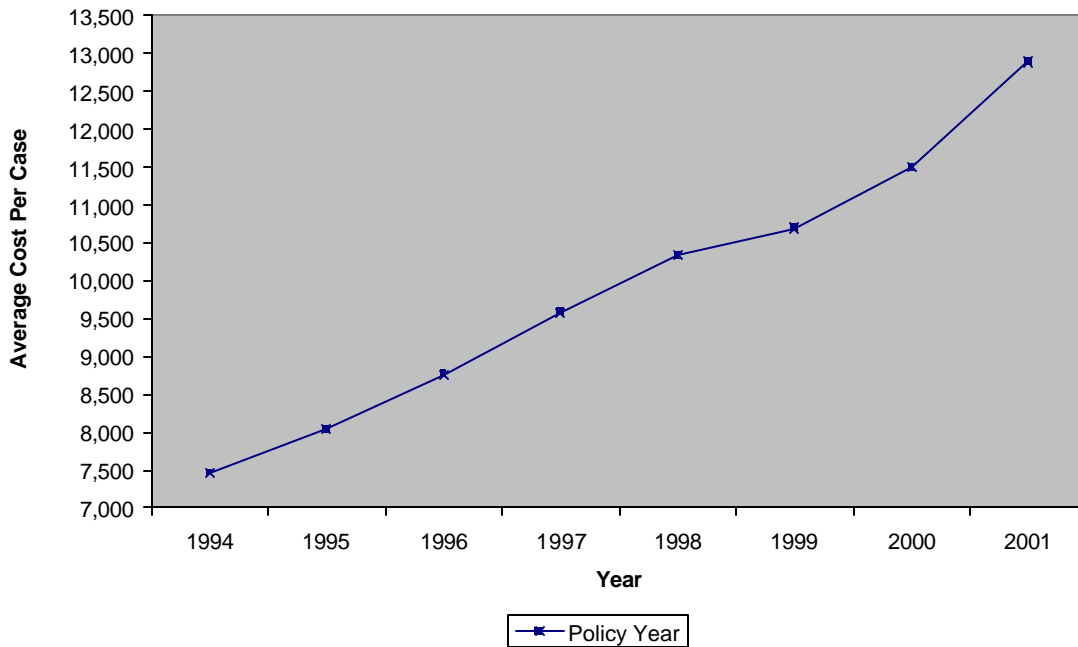


The modest decrease in the Maryland medical loss ratio in policy year 2001 was the third consecutive decrease after relatively stable loss ratios from 1994 through 1998.

## Maryland

As with indemnity, underlying these loss ratios are the number of workplace injuries (claim frequency) and the average cost of each of these injuries. The frequency chart discussed earlier is also a primary driver of medical costs. For these workplace injuries, the average medical cost over time is tracked in the following chart.

### Maryland Medical Cost Per Case

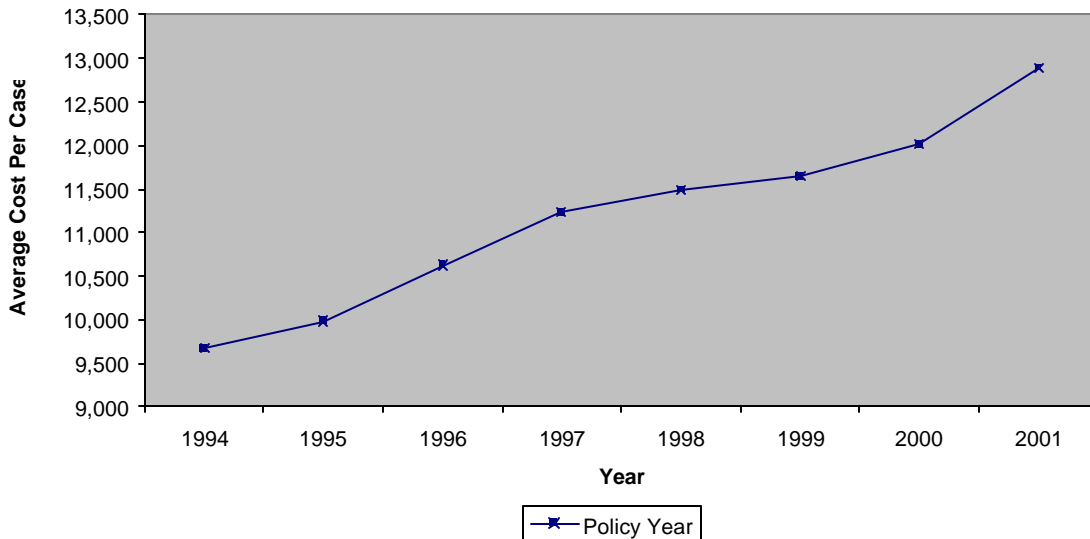


Maryland's medical cost per case continued to increase in policy year 2001.

## Maryland

After removing the impact of the growth in workers wages that occurred over this time period, the average medical cost per case in excess of wage growth is shown in the following chart:

### Maryland Medical Cost Per Case



Maryland's medical average cost per case in excess of wage growth has risen steadily since 1994 and experienced a particularly large increase in the latest policy period.

In last year's Maryland filing, NCCI proposed a medical trend factor of 1.5% per year. Based on our analysis this year, we are again proposing a medical trend factor of 1.5% per year. This means that medical benefits are expected to increase at a slightly faster pace than workers' wages.

### **BENEFITS**

Workers injured in Maryland receive wage replacement (indemnity) benefits at a rate of  $2/3$  of their pre-injury weekly wage. These benefits are subject to a weekly minimum and maximum.

Each January, the minimum and maximum weekly benefits are updated based on the most recent average weekly wage in Maryland. Since losses from Policy Years 2000 and 2001 reflect the indemnity benefits being paid at that time, it is necessary for NCCI to reflect what the level of these benefits will be starting January 1, 2004. Updating the proposed voluntary loss costs to reflect the impact of minimum and maximum benefit increases on January 1, 2004 results in a 1.8% increase for indemnity losses. Since indemnity claims comprise 57.2% of all losses, the overall impact is 1.0%.

A similar adjustment for medical costs needed to be made as a result of an increase in the hospital fee schedule implemented by the Maryland Health Services Cost Review Commission. The hospital fee schedule was increased by an average of 5.1% effective July 1, 2003. The total impact on medical costs is estimated at 1.9%. Since medical claims comprise 42.8% of all losses, the estimated overall impact is 0.8%.

Another adjustment was needed as a result of revisions to the attorney fee schedule in Maryland by the Workers' Compensation Commission. Various changes and amendments to the attorney fee schedule became effective from February to April of 2003. The method used to determine certain fees and maximums varies by injury. The most significant dollar change was to fees for permanent partial (PP) and permanent total (PT) disability. The maximum fee allowed increased from \$7,500 to 20 times the state average weekly wage (SAWW). Fees for most of the other indemnity injury types (except for TT and TP) and legal procedures (except for settlement agreements) also increased by almost 100%. We estimate that the cost impact on the total workers' compensation system is an increase of +3.1%.

Due to a recent decision by Maryland's highest court, yet another adjustment was required. On June 6, 2003, Maryland's Court of Appeals, the state's highest court, issued a decision in *Harris v. Board of Education of Howard County* that changed the compensability rules under the workers' compensation act. The court overruled a judicially created doctrine permitting denial of benefits for injuries that do not result from "unusual activity" on the part of the claimant. The court held that the unusual activity requirement is a "distinct minority view in the nation and contravenes the liberal purposes of the Workers' Compensation Act." We estimate an overall increase in workers' compensation system costs in Maryland of 2% as a result of this decision.

## Maryland

### CONCLUSION

This filing document provides a high-level perspective on why Maryland loss costs need to decrease –4.7%. This decrease is due, in large part, to a continued decline in frequency of claims; however, medical costs continue to increase and there are early signs that indemnity costs will no longer continue in their favorable downward direction.

These observations are consistent with what is being observed in the latest national data. In many states, efforts have been made to erode legislative reform, increase benefits, and weaken the exclusive remedy provision in workers compensation. Some reports also indicate that the savings from reform, managed care, and safety awareness may have begun to run dry.

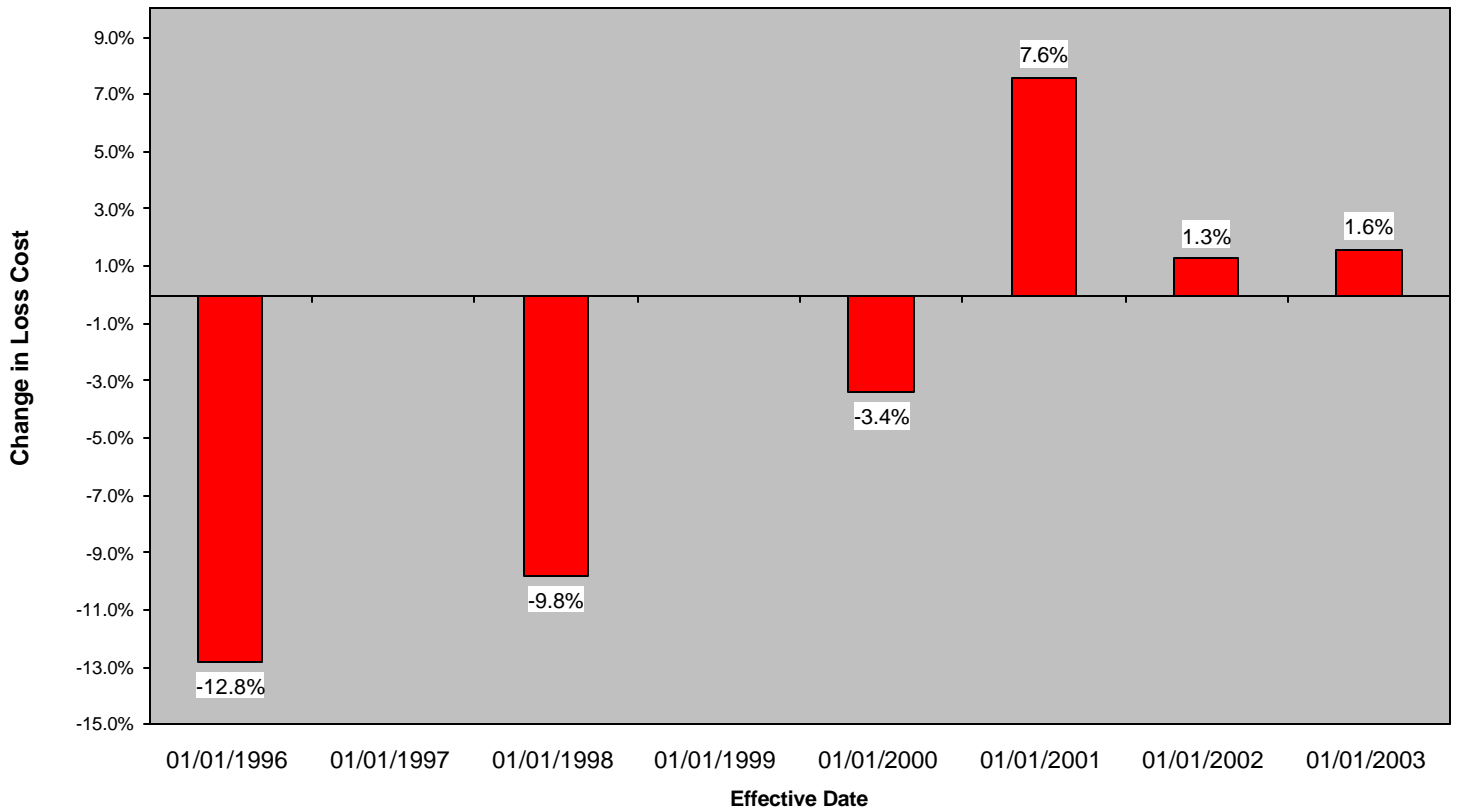
Therefore, continued diligence is needed by Maryland workers compensation stakeholders to ensure that the system remains strong and competitive.

Following are various exhibits containing other Maryland workers compensation information that may be of interest, as well as the proposed loss costs and rating values by classification.

**Maryland**

**EXHIBIT I**

**Maryland Historical Loss Cost Changes**



- No Loss Cost filings were made by NCCI for 1/1/97 and 1/1/99.
- 01/01/2002 increase of 1.3% was from law only filing.

After several years of filing loss cost decreases, NCCI filed increases in loss costs in 2001, 2002 (law Only) and 2003.

## Maryland

### EXHIBIT II

#### RECENT KEY LEGISLATION AFFECTING WORKERS COMPENSATION

| <i>2003 Key Legislation</i> |             |   |         |
|-----------------------------|-------------|---|---------|
| Effective Date              | Bill Number | Description   | Impact  |
| 10-1-03                     | H.B. 690    | Specifies a new benefit formula and cap for wholly dependent surviving spouses who become partially self-supporting after the death of a covered employee.  | minimal |
| 7-1-03                      | n/a         | Maryland Health Services Cost Review Commission <ul style="list-style-type: none"> <li>• approved increase to hospital inpatient services of 5.33%</li> <li>• approved increase to hospital outpatient services of 4.33%</li> </ul>   | +0.8%   |
| 6-6-03                      | n/a         | <i>Harris v. Board of Education of Howard County</i> - decision by state's highest court changed the compensability rules under the workers' compensation act. The court overruled a judicially created doctrine permitting denial of benefits for injuries that do not result from "unusual activity" on the part of the claimant.   | +2.0%   |
| 2-13-03<br>4-08-03          | n/a         | Maryland Workers' Compensation Commission revised the attorney fee schedule in Maryland. Various changes and amendments to the attorney fee schedule became effective from February to April of 2003. The method used to determine certain fees and maximums varies by injury. The most significant dollar change was to fees for permanent partial (PP) and permanent total (PT) disability. | +3.1%   |

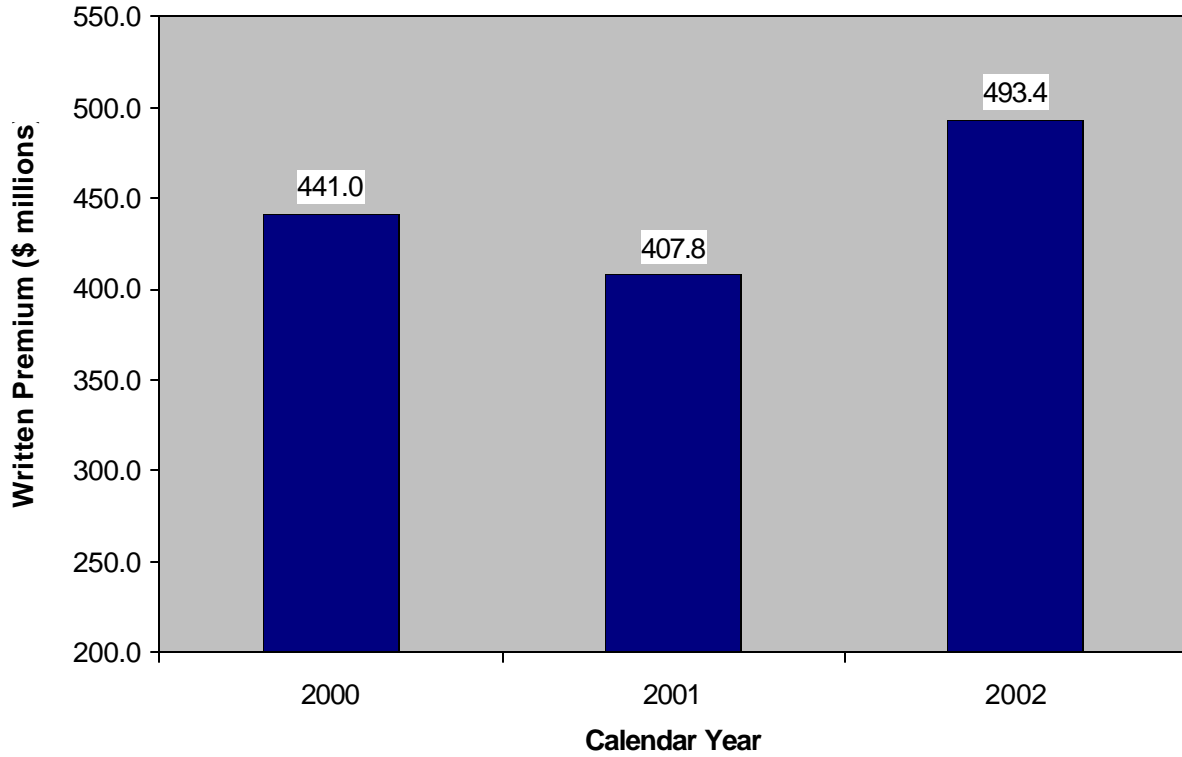
## Maryland

| <i>2002 Key Legislation</i> |             |   |        |
|-----------------------------|-------------|---|--------|
| Effective Date              | Bill Number | Description   | Impact |
| 1-1-02                      | S.B. 371    | Establishes risk based capital requirements for the Injured Workers' Insurance Fund.  | None   |
| 10-1-02                     | S.B. 522    | Repeals sunset date of provision specifying various aspects of the workers compensation system that may be established through collective bargaining.   | None   |
| 6-1-02                      | S.B. 772    | Amends the formula for calculating the tax against each insurer for the maintenance of the Workers Compensation Commission. Establishes a workers compensation fund in the state treasury and creates an advisory committee on the Commissioner's budget. | None   |
| 7-1-02                      |             | Maryland Health Services Cost Review Commission increase in hospital fee schedule by an average of 3.2%.  | +0.6%  |
| 10-1-02                     | H.B. 491    | Creates presumption that a sole proprietor is not a covered employee if the sole proprietor provides a certain notice to the principal contractor.  | None   |
| 10-1-02                     | H.B. 887    | Increases the maximum limit of specified death benefits payable to partly dependent survivors from \$45,000 to \$60,000; Modifies the calculation of the weekly death benefits payable to partly dependent survivors.                                     | None   |
| 10-1-02                     | H.B. 1318   | Maryland Workers Compensation Commission may not modify an award unless the modification is applied for within 5 years after the latter of: date of accident, date of disablement or last compensation payment.   | None   |

## Maryland

### EXHIBIT III

#### Maryland Written Premium

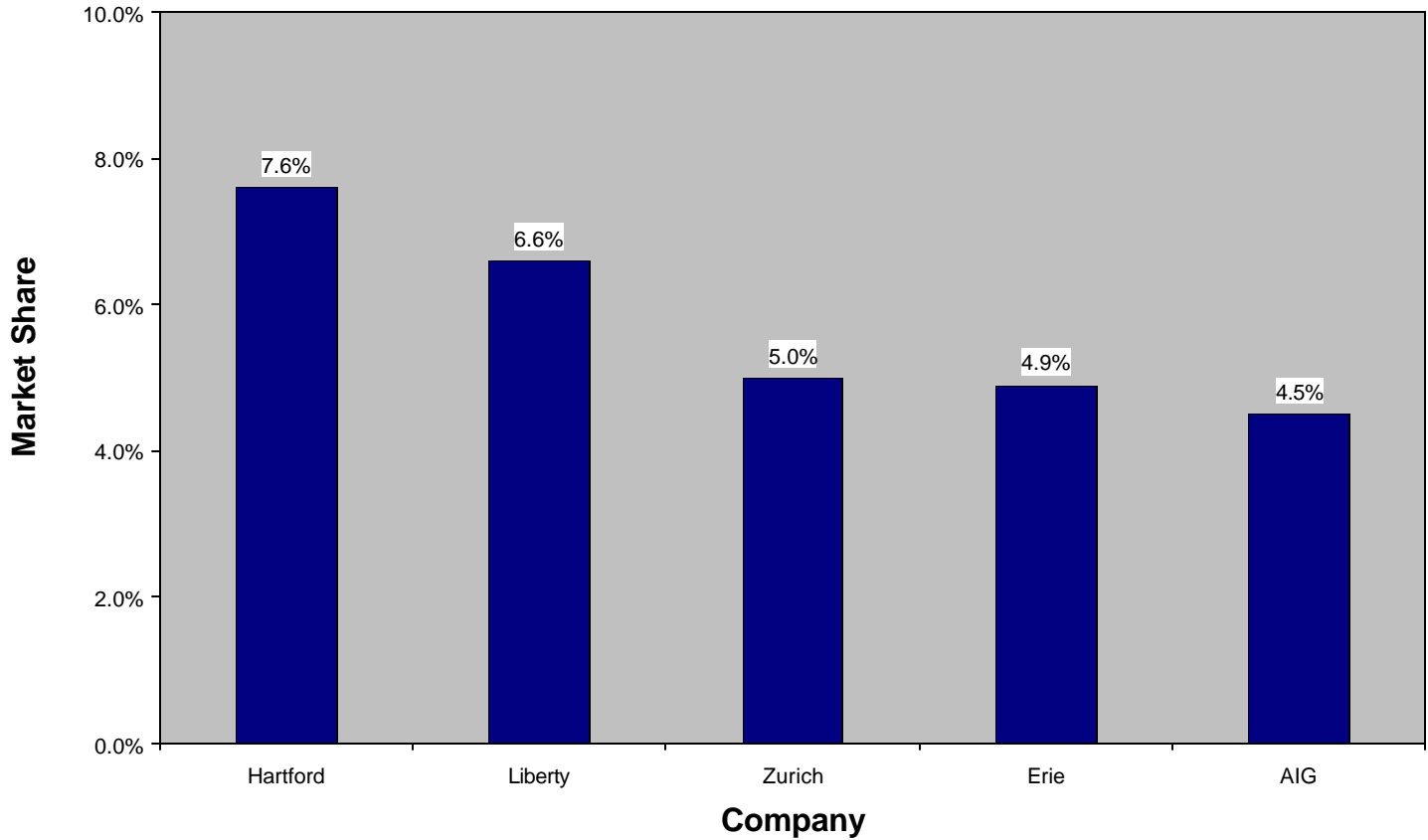


Maryland's Calendar Year written premium increased significantly in 2002.

## Maryland

### EXHIBIT IV

#### Maryland Largest Workers Compensation Writers CY 2002



The five largest private insurance companies providing workers compensation insurance in Maryland in 2002 are shown in this chart.

**PURE PREMIUMS - NOT RATES**

Pure premiums exclude all expense provisions.

**Exhibit V**

*Effective November 1, 2003*

| CLASS CODE | LOSS COST | ELR    | D RATIO | EX-MED RATIO | CLASS CODE | LOSS COST | ELR  | D RATIO | EX-MED RATIO | CLASS CODE | LOSS COST | ELR  | D RATIO | EX-MED RATIO |
|------------|-----------|--------|---------|--------------|------------|-----------|------|---------|--------------|------------|-----------|------|---------|--------------|
| 0005       | 2.20      | 1.18   | 0.23    | 0.32         | 2001       | 1.47      | 0.85 | 0.26    | 0.34         | 2651       | 1.68      | 0.98 | 0.27    | 0.35         |
| 0008       | 1.78      | 0.88   | 0.20    | 0.31         | 2002       | 5.46      | 2.53 | 0.24    | 0.38         | 2660       | 1.69      | 1.03 | 0.28    | 0.35         |
| 0016       | 4.08      | 2.14   | 0.23    | 0.36         | 2003       | 3.03      | 1.60 | 0.24    | 0.28         | 2670       | 2.06      | 1.26 | 0.28    | 0.33         |
| 0034       | 3.73      | 2.18   | 0.27    | 0.33         | 2014       | 4.18      | 1.97 | 0.20    | 0.34         | 2683       | 2.05      | 1.20 | 0.27    | 0.36         |
| 0035       | 1.74      | 0.96   | 0.25    | 0.35         | 2016       | 1.62      | 0.94 | 0.26    | 0.32         | 2688       | 1.90      | 1.08 | 0.25    | 0.29         |
| 0036       | 4.12      | 2.07   | 0.21    | 0.30         | 2021       | 2.49      | 1.32 | 0.22    | 0.27         | 2702       | 18.68     | 7.54 | 0.15    | 0.23         |
| 0037       | 2.77      | 1.32   | 0.19    | 0.26         | 2039       | 2.96      | 1.68 | 0.25    | 0.30         | 2710       | 7.28      | 3.63 | 0.22    | 0.34         |
| 0042       | 4.06      | 2.22   | 0.24    | 0.31         | 2041       | 2.70      | 1.61 | 0.27    | 0.36         | 2714       | 3.96      | 2.12 | 0.23    | 0.34         |
| 0050       | 4.49      | 2.29   | 0.21    | 0.29         | 2065       | 3.54      | 1.85 | 0.22    | 0.32         | 2731       | 4.80      | 2.60 | 0.24    | 0.36         |
| 0059D      | 0.31      | 0.08   | 0.18    | -            | 2070       | 3.04      | 1.64 | 0.24    | 0.35         | 2735       | 3.25      | 1.92 | 0.27    | 0.34         |
| 0065D      | 0.08      | 0.02   | 0.24    | -            | 2081       | 4.86      | 2.62 | 0.23    | 0.32         | 2759       | 4.33      | 2.58 | 0.27    | 0.31         |
| 0066D      | 0.08      | 0.02   | 0.26    | -            | 2089       | 3.11      | 1.82 | 0.27    | 0.34         | 2790       | 1.62      | 0.91 | 0.25    | 0.29         |
| 0067D      | 0.08      | 0.02   | 0.27    | -            | 2095       | 3.36      | 1.98 | 0.27    | 0.33         | 2791X      | 2.87      | 1.38 | 0.18    | 0.25         |
| 0079       | 2.62      | 1.25   | 0.20    | 0.26         | 2105       | 2.50      | 1.43 | 0.25    | 0.32         | 2802       | 3.01      | 1.67 | 0.24    | 0.32         |
| 0083       | 5.01      | 2.83   | 0.25    | 0.29         | 2110       | 2.18      | 1.30 | 0.27    | 0.31         | 2812       | 2.86      | 1.58 | 0.24    | 0.29         |
| 0106       | 14.75     | 6.40   | 0.19    | 0.39         | 2111       | 1.95      | 1.14 | 0.26    | 0.32         | 2835       | 1.90      | 1.12 | 0.26    | 0.34         |
| 0113       | 2.56      | 1.35   | 0.22    | 0.31         | 2112       | 4.62      | 2.86 | 0.28    | 0.28         | 2836       | 3.46      | 2.09 | 0.26    | 0.24         |
| 0170       | 4.52      | 2.64   | 0.27    | 0.37         | 2114       | 2.40      | 1.38 | 0.26    | 0.31         | 2841       | 3.59      | 2.22 | 0.29    | 0.36         |
| 0251       | 3.29      | 1.62   | 0.20    | 0.30         | 2121       | 2.81      | 1.31 | 0.18    | 0.26         | 2881       | 2.06      | 1.21 | 0.27    | 0.30         |
| 0400       | 5.99      | 3.11   | 0.22    | 0.30         | 2130       | 3.28      | 1.73 | 0.29    | 0.25         | 2883       | 2.72      | 1.53 | 0.25    | 0.31         |
| 0401       | 8.82      | 3.91   | 0.18    | 0.29         | 2131       | 3.77      | 2.30 | 0.28    | 0.25         | 2913       | 3.14      | 2.10 | 0.32    | 0.29         |
| 0771N      | 0.41      | -      | -       | -            | 2143       | 2.16      | 1.12 | 0.22    | 0.29         | 2915       | 3.88      | 2.02 | 0.22    | 0.31         |
| 0908P      | 56.00     | 30.18  | 0.23    | 0.30         | 2150       | 6.10      | 3.57 | 0.26    | 0.31         | 2916       | 2.04      | 1.18 | 0.26    | 0.36         |
| 0909P      | 58.00     | 32.33  | 0.25    | 0.34         | 2156       | 3.04      | 1.79 | 0.26    | 0.27         | 2923       | 2.00      | 1.14 | 0.25    | 0.31         |
| 0912P      | 262.00    | 142.97 | 0.23    | 0.28         | 2157       | 4.45      | 2.36 | 0.23    | 0.32         | 2942       | 2.63      | 1.61 | 0.28    | 0.32         |
| 0913P      | 96.00     | 49.22  | 0.21    | 0.26         | 2172       | 1.48      | 0.70 | 0.18    | 0.20         | 2960       | 4.98      | 2.53 | 0.21    | 0.30         |
| 0917       | 2.85      | 1.71   | 0.28    | 0.37         | 2174       | 2.17      | 1.21 | 0.23    | 0.24         | 3004       | 4.17      | 2.19 | 0.23    | 0.24         |
| 1005*      | 8.44      | 1.02   | 0.18    | 0.20         | 2211       | 5.69      | 2.78 | 0.21    | 0.30         | 3018       | 6.22      | 3.75 | 0.27    | 0.25         |
| 1016*      | 29.09     | 1.94   | 0.15    | 0.07         | 2220       | 1.34      | 0.73 | 0.24    | 0.29         | 3022       | 2.21      | 1.22 | 0.24    | 0.32         |
| 1164E      | 5.52      | 1.98   | 0.14    | 0.19         | 2286       | 1.41      | 0.82 | 0.26    | 0.28         | 3027       | 2.03      | 1.14 | 0.25    | 0.33         |
| 1165E      | 2.19      | 0.94   | 0.17    | 0.26         | 2288       | 3.85      | 2.04 | 0.23    | 0.32         | 3028       | 2.95      | 1.49 | 0.21    | 0.27         |
| 1320       | 2.00      | 0.88   | 0.18    | 0.26         | 2300       | 2.28      | 1.31 | 0.25    | 0.31         | 3030       | 9.45      | 4.44 | 0.20    | 0.32         |
| 1322       | 11.94     | 4.94   | 0.16    | 0.21         | 2302       | 1.05      | 0.54 | 0.22    | 0.33         | 3040       | 7.01      | 3.35 | 0.21    | 0.37         |
| 1430       | 4.89      | 2.30   | 0.20    | 0.26         | 2305       | 2.10      | 1.17 | 0.24    | 0.26         | 3041       | 3.82      | 2.19 | 0.25    | 0.30         |
| 1438       | 2.43      | 1.15   | 0.20    | 0.27         | 2361       | 1.42      | 0.83 | 0.26    | 0.30         | 3042       | 2.52      | 1.32 | 0.22    | 0.29         |
| 1452       | 1.52      | 0.69   | 0.18    | 0.22         | 2362       | 1.48      | 0.82 | 0.24    | 0.30         | 3064       | 8.10      | 3.82 | 0.20    | 0.44         |
| 1463       | 8.79      | 4.01   | 0.19    | 0.25         | 2380       | 1.81      | 1.05 | 0.26    | 0.33         | 3066       | 3.49      | 1.88 | 0.23    | 0.32         |
| 1470       | -         | 1.41   | 0.19    | -            | 2386       | 1.22      | 0.62 | 0.20    | 0.31         | 3075X      | 3.12      | 1.70 | 0.23    | 0.20         |
| 1472       | 3.15      | 1.41   | 0.19    | 0.31         | 2388       | 1.69      | 1.13 | 0.32    | 0.28         | 3076       | 2.18      | 1.17 | 0.23    | 0.34         |
| 1624E      | 4.16      | 2.02   | 0.22    | 0.31         | 2402       | 2.63      | 1.52 | 0.27    | 0.28         | 3081D      | 4.76      | 2.68 | 0.27    | 0.28         |
| 1642       | 2.60      | 1.23   | 0.20    | 0.25         | 2413       | 2.48      | 1.49 | 0.27    | 0.26         | 3082D      | 5.44      | 2.74 | 0.24    | 0.38         |
| 1654       | 4.55      | 2.43   | 0.25    | 0.33         | 2416       | 1.61      | 0.91 | 0.25    | 0.29         | 3085D      | 2.75      | 1.48 | 0.26    | 0.35         |
| 1655       | 3.04      | 1.38   | 0.18    | 0.21         | 2417       | 1.59      | 0.86 | 0.23    | 0.29         | 3110       | 3.29      | 1.73 | 0.22    | 0.28         |
| 1699       | 2.33      | 1.08   | 0.20    | 0.29         | 2501       | 1.60      | 0.93 | 0.26    | 0.32         | 3111       | 2.20      | 1.20 | 0.24    | 0.29         |
| 1701       | 2.54      | 1.42   | 0.26    | 0.26         | 2503       | 1.10      | 0.63 | 0.26    | 0.31         | 3113       | 1.41      | 0.83 | 0.26    | 0.30         |
| 1710E      | 5.91      | 2.52   | 0.17    | 0.29         | 2534       | 2.40      | 1.47 | 0.28    | 0.33         | 3114       | 2.03      | 1.07 | 0.23    | 0.32         |
| 1741E      | 2.75      | 1.02   | 0.18    | 0.26         | 2570       | 4.21      | 2.51 | 0.27    | 0.31         | 3118       | 2.49      | 1.34 | 0.23    | 0.30         |
| 1747       | 2.01      | 0.89   | 0.18    | 0.22         | 2576       | 3.01      | 1.56 | 0.25    | 0.30         | 3119       | 1.08      | 0.64 | 0.26    | 0.36         |
| 1748       | 3.15      | 1.80   | 0.27    | 0.30         | 2578       | 3.93      | 2.34 | 0.27    | 0.33         | 3122       | 2.11      | 1.24 | 0.27    | 0.36         |
| 1803D      | 5.47      | 2.55   | 0.23    | 0.29         | 2585       | 2.66      | 1.62 | 0.28    | 0.29         | 3126       | 2.49      | 1.35 | 0.23    | 0.30         |
| 1852D      | 2.22      | 1.08   | 0.22    | 0.24         | 2586       | 1.10      | 0.59 | 0.23    | 0.30         | 3131       | 3.83      | 1.85 | 0.24    | 0.43         |
| 1853       | 3.68      | 2.10   | 0.25    | 0.31         | 2587       | 1.60      | 0.97 | 0.28    | 0.28         | 3132       | 3.11      | 1.63 | 0.24    | 0.29         |
| 1860       | 1.86      | 1.01   | 0.29    | 0.31         | 2589       | 1.45      | 0.84 | 0.26    | 0.30         | 3145       | 1.98      | 1.12 | 0.25    | 0.35         |
| 1924       | 2.15      | 1.24   | 0.26    | 0.31         | 2600       | 2.74      | 1.47 | 0.23    | 0.31         | 3146       | 3.53      | 2.21 | 0.29    | 0.32         |
| 1925       | 4.05      | 2.07   | 0.21    | 0.29         | 2623       | 1.59      | 0.86 | 0.23    | 0.27         | 3169       | 2.44      | 1.39 | 0.25    | 0.33         |

\* Refer to the Footnotes Page for additional information on this class code.

**PURE PREMIUMS - NOT RATES**

**MARYLAND**

Pure premiums exclude all expense provisions.

Exhibit V

Page S2

Effective November 1, 2003

| CLASS CODE | LOSS COST | ELR  | D RATIO | EX-MED RATIO | CLASS CODE | LOSS COST | ELR  | D RATIO | EX-MED RATIO | CLASS CODE | LOSS COST | ELR   | D RATIO | EX-MED RATIO |
|------------|-----------|------|---------|--------------|------------|-----------|------|---------|--------------|------------|-----------|-------|---------|--------------|
| 3175D      | 1.26      | 0.65 | 0.22    | 0.27         | 3830       | 1.36      | 0.73 | 0.25    | 0.30         | 4493       | 2.30      | 1.22  | 0.22    | 0.30         |
| 3179       | 2.01      | 1.19 | 0.27    | 0.28         | 3851       | 2.32      | 1.29 | 0.24    | 0.31         | 4511       | 0.37      | 0.19  | 0.22    | 0.32         |
| 3180       | 1.68      | 1.01 | 0.28    | 0.34         | 3865       | 1.98      | 1.20 | 0.27    | 0.34         | 4536X      | 2.28      | 0.88  | 0.15    | 0.16         |
| 3188       | 1.59      | 0.94 | 0.27    | 0.35         | 3881       | 4.21      | 2.12 | 0.21    | 0.31         | 4557       | 1.48      | 0.81  | 0.24    | 0.29         |
| 3220       | 2.32      | 1.30 | 0.24    | 0.27         | 4000       | 3.54      | 1.66 | 0.20    | 0.25         | 4558       | 1.52      | 0.83  | 0.23    | 0.28         |
| 3223       | 2.47      | 1.47 | 0.27    | 0.33         | 4021       | 3.81      | 2.36 | 0.28    | 0.27         | 4561       | 2.10      | 0.95  | 0.17    | 0.21         |
| 3224       | 4.92      | 3.58 | 0.31    | 0.20         | 4024E      | 2.26      | 1.24 | 0.26    | 0.30         | 4568       | 1.39      | 0.68  | 0.22    | 0.34         |
| 3227       | 3.85      | 1.85 | 0.21    | 0.36         | 4034       | 7.03      | 3.52 | 0.22    | 0.30         | 4581       | 0.97      | 0.40  | 0.17    | 0.34         |
| 3240       | 2.03      | 1.04 | 0.21    | 0.27         | 4036       | 1.89      | 0.92 | 0.21    | 0.26         | 4583       | 4.64      | 2.29  | 0.22    | 0.36         |
| 3241       | 3.58      | 1.90 | 0.23    | 0.33         | 4038       | 3.04      | 1.87 | 0.28    | 0.34         | 4584X      | 0.27      | 0.11  | 0.15    | 0.13         |
| 3255       | 4.64      | 3.16 | 0.32    | 0.26         | 4053       | 2.29      | 1.18 | 0.22    | 0.36         | 4611       | 1.15      | 0.64  | 0.24    | 0.26         |
| 3257       | 2.55      | 1.40 | 0.24    | 0.35         | 4061       | 4.32      | 2.46 | 0.25    | 0.26         | 4635       | 1.74      | 0.75  | 0.19    | 0.30         |
| 3270       | 1.41      | 0.82 | 0.26    | 0.32         | 4062       | 2.62      | 1.47 | 0.25    | 0.30         | 4653       | 1.45      | 0.76  | 0.23    | 0.33         |
| 3300       | 3.22      | 1.85 | 0.25    | 0.33         | 4101       | 2.19      | 1.21 | 0.26    | 0.33         | 4665       | 5.28      | 2.61  | 0.22    | 0.27         |
| 3303       | 2.87      | 1.59 | 0.24    | 0.32         | 4111       | 1.77      | 1.04 | 0.26    | 0.33         | 4670       | 5.24      | 2.53  | 0.21    | 0.27         |
| 3307       | 4.63      | 2.25 | 0.20    | 0.33         | 4112       | 0.60      | 0.31 | 0.22    | 0.28         | 4683       | 2.07      | 1.20  | 0.26    | 0.30         |
| 3315       | 2.85      | 1.55 | 0.24    | 0.34         | 4113       | 1.65      | 0.81 | 0.23    | 0.27         | 4686       | 2.09      | 0.88  | 0.17    | 0.31         |
| 3334       | 3.03      | 1.39 | 0.17    | 0.25         | 4114       | 3.46      | 1.90 | 0.24    | 0.29         | 4692       | 0.51      | 0.27  | 0.23    | 0.28         |
| 3336       | 1.99      | 1.18 | 0.27    | 0.32         | 4130       | 3.63      | 1.99 | 0.24    | 0.31         | 4693       | 0.82      | 0.51  | 0.28    | 0.30         |
| 3365       | 7.36      | 3.45 | 0.20    | 0.30         | 4131       | 2.52      | 1.49 | 0.29    | 0.29         | 4703       | 1.30      | 0.70  | 0.23    | 0.29         |
| 3372       | 5.23      | 2.61 | 0.24    | 0.49         | 4133       | 2.32      | 1.26 | 0.23    | 0.26         | 4717       | 2.13      | 1.25  | 0.25    | 0.24         |
| 3373       | 8.30      | 4.51 | 0.23    | 0.30         | 4150       | 0.93      | 0.56 | 0.27    | 0.32         | 4720       | 1.27      | 0.65  | 0.21    | 0.33         |
| 3383       | 1.49      | 0.91 | 0.28    | 0.30         | 4206       | 4.11      | 1.95 | 0.19    | 0.29         | 4740       | 1.90      | 0.74  | 0.17    | 0.26         |
| 3385       | 1.01      | 0.59 | 0.26    | 0.32         | 4207       | 0.83      | 0.46 | 0.24    | 0.30         | 4741       | 1.62      | 0.88  | 0.23    | 0.29         |
| 3400       | 3.09      | 1.64 | 0.23    | 0.36         | 4239       | 4.05      | 1.98 | 0.21    | 0.29         | 4751       | 1.30      | 0.67  | 0.23    | 0.31         |
| 3507       | 2.53      | 1.37 | 0.23    | 0.31         | 4240       | 2.90      | 1.77 | 0.28    | 0.30         | 4771N      | 2.35      | 1.07  | 0.21    | 0.31         |
| 3515       | 2.05      | 1.09 | 0.23    | 0.30         | 4243       | 1.51      | 0.85 | 0.25    | 0.30         | 4777       | 3.17      | 1.33  | 0.16    | 0.24         |
| 3548       | 1.57      | 0.77 | 0.20    | 0.31         | 4244       | 3.56      | 1.87 | 0.23    | 0.38         | 4825       | 0.87      | 0.42  | 0.22    | 0.34         |
| 3559       | 2.01      | 1.08 | 0.23    | 0.34         | 4250       | 1.37      | 0.79 | 0.26    | 0.31         | 4828       | 0.92      | 0.44  | 0.21    | 0.27         |
| 3574       | 0.92      | 0.57 | 0.29    | 0.33         | 4251       | 1.67      | 0.96 | 0.25    | 0.29         | 4829       | 0.90      | 0.50  | 0.25    | 0.25         |
| 3581       | 0.90      | 0.51 | 0.25    | 0.30         | 4263       | 2.14      | 1.24 | 0.26    | 0.28         | 4902       | 1.84      | 1.12  | 0.28    | 0.33         |
| 3612       | 1.47      | 0.81 | 0.24    | 0.28         | 4273       | 1.77      | 1.02 | 0.26    | 0.32         | 4923       | 1.07      | 0.63  | 0.27    | 0.34         |
| 3620       | 3.07      | 1.44 | 0.20    | 0.27         | 4279       | 1.38      | 0.77 | 0.24    | 0.30         | 5020       | 8.03      | 3.24  | 0.17    | 0.21         |
| 3629       | 1.07      | 0.62 | 0.26    | 0.28         | 4282       | 2.01      | 1.19 | 0.26    | 0.25         | 5022       | 7.34      | 3.40  | 0.20    | 0.31         |
| 3632       | 2.24      | 1.24 | 0.24    | 0.29         | 4283       | 2.56      | 1.33 | 0.22    | 0.37         | 5037       | 28.19     | 10.92 | 0.16    | 0.28         |
| 3634       | 1.78      | 0.96 | 0.23    | 0.35         | 4299       | 1.69      | 0.91 | 0.23    | 0.30         | 5040       | 28.33     | 11.08 | 0.16    | 0.26         |
| 3635       | 2.02      | 1.14 | 0.25    | 0.33         | 4304X      | 2.18      | 1.21 | 0.24    | 0.29         | 5057       | 16.06     | 5.94  | 0.14    | 0.22         |
| 3638       | 1.55      | 0.86 | 0.25    | 0.31         | 4307       | 1.66      | 0.93 | 0.24    | 0.33         | 5059       | 36.18     | 14.71 | 0.18    | 0.30         |
| 3642       | 1.16      | 0.67 | 0.26    | 0.31         | 4308       | 1.16      | 0.87 | 0.37    | 0.23         | 5069       | 39.37     | 17.62 | 0.19    | 0.38         |
| 3643       | 2.07      | 1.15 | 0.24    | 0.30         | 4351X      | 0.87      | 0.37 | 0.16    | 0.19         | 5102       | 10.32     | 4.39  | 0.17    | 0.31         |
| 3647       | 1.19      | 0.64 | 0.23    | 0.32         | 4352       | 1.07      | 0.59 | 0.24    | 0.30         | 5146       | 4.33      | 2.17  | 0.22    | 0.24         |
| 3648       | 1.76      | 1.06 | 0.28    | 0.34         | 4360       | 1.22      | 0.63 | 0.22    | 0.40         | 5160       | 3.49      | 1.58  | 0.18    | 0.24         |
| 3681       | 0.57      | 0.30 | 0.23    | 0.33         | 4361       | 0.74      | 0.42 | 0.25    | 0.34         | 5183       | 4.79      | 2.30  | 0.21    | 0.30         |
| 3685       | 0.66      | 0.32 | 0.20    | 0.27         | 4362       | 0.61      | 0.33 | 0.24    | 0.29         | 5188       | 4.47      | 2.25  | 0.22    | 0.26         |
| 3719       | 2.20      | 0.94 | 0.17    | 0.25         | 4410       | 4.06      | 2.13 | 0.24    | 0.48         | 5190       | 4.51      | 2.12  | 0.20    | 0.29         |
| 3724       | 4.59      | 2.19 | 0.20    | 0.28         | 4417X      | 1.64      | 1.07 | 0.30    | 0.24         | 5191       | 0.57      | 0.30  | 0.23    | 0.28         |
| 3726       | 10.89     | 4.25 | 0.16    | 0.28         | 4420       | 1.99      | 0.98 | 0.21    | 0.22         | 5192       | 2.49      | 1.34  | 0.23    | 0.30         |
| 3803       | 3.86      | 1.97 | 0.21    | 0.24         | 4431       | 1.83      | 1.09 | 0.27    | 0.32         | 5213       | 8.61      | 4.00  | 0.20    | 0.31         |
| 3807       | 2.06      | 1.19 | 0.26    | 0.32         | 4432       | 1.56      | 0.94 | 0.27    | 0.31         | 5215       | 4.69      | 2.43  | 0.22    | 0.29         |
| 3808       | 2.78      | 1.49 | 0.22    | 0.22         | 4439       | 2.28      | 1.20 | 0.24    | 0.33         | 5221       | 4.37      | 2.17  | 0.22    | 0.32         |
| 3821       | 3.77      | 2.03 | 0.24    | 0.29         | 4452       | 2.49      | 1.42 | 0.26    | 0.36         | 5222       | 8.88      | 4.20  | 0.21    | 0.26         |
| 3822       | 3.48      | 2.00 | 0.28    | 0.33         | 4459       | 2.25      | 1.32 | 0.26    | 0.31         | 5223       | 6.70      | 3.72  | 0.26    | 0.28         |
| 3824       | 3.82      | 2.05 | 0.23    | 0.28         | 4470       | 1.38      | 0.74 | 0.25    | 0.31         | 5348       | 6.24      | 2.89  | 0.20    | 0.36         |
| 3826       | 1.39      | 0.73 | 0.23    | 0.40         | 4479X      | 1.55      | 0.79 | 0.20    | 0.27         | 5402       | 7.69      | 3.72  | 0.19    | 0.24         |
| 3827       | 1.00      | 0.59 | 0.26    | 0.25         | 4484       | 2.33      | 1.35 | 0.26    | 0.31         | 5403       | 6.80      | 3.29  | 0.21    | 0.33         |

\* Refer to the Footnotes Page for additional information on this class code.

**PURE PREMIUMS - NOT RATES**

Pure premiums exclude all expense provisions.

**Exhibit V**

*Effective November 1, 2003*

| CLASS CODE | LOSS COST | ELR   | D RATIO | EX-MED RATIO | CLASS CODE | LOSS COST | ELR   | D RATIO | EX-MED RATIO | CLASS CODE | LOSS COST | ELR  | D RATIO | EX-MED RATIO |
|------------|-----------|-------|---------|--------------|------------|-----------|-------|---------|--------------|------------|-----------|------|---------|--------------|
| 5437       | 5.52      | 2.65  | 0.21    | 0.28         | 6834       | 2.03      | 1.10  | 0.25    | 0.32         | 7445N      | 0.15      | -    | -       | -            |
| 5443       | 4.78      | 2.49  | 0.23    | 0.26         | 6836       | 2.41      | 1.13  | 0.20    | 0.31         | 7453N      | 1.01      | -    | -       | -            |
| 5445       | 6.80      | 3.13  | 0.20    | 0.30         | 6843F      | 16.15     | 8.55  | 0.18    | 0.38         | 7502       | 1.12      | 0.56 | 0.22    | 0.28         |
| 5462       | 10.25     | 4.79  | 0.20    | 0.29         | 6845F      | 12.68     | 6.87  | 0.19    | 0.35         | 7515       | 1.12      | 0.47 | 0.18    | 0.26         |
| 5472       | 7.25      | 3.28  | 0.20    | 0.37         | 6854       | 4.27      | 1.75  | 0.17    | 0.20         | 7520       | 2.10      | 1.00 | 0.21    | 0.31         |
| 5473       | 8.02      | 3.88  | 0.23    | 0.46         | 6872F      | 10.75     | 6.01  | 0.18    | 0.27         | 7538       | 14.61     | 5.58 | 0.17    | 0.41         |
| 5474       | 5.47      | 2.64  | 0.21    | 0.30         | 6874F      | 25.58     | 13.33 | 0.14    | 0.25         | 7539       | 0.86      | 0.38 | 0.18    | 0.27         |
| 5478       | 4.20      | 2.05  | 0.21    | 0.27         | 6882       | 5.90      | 2.18  | 0.14    | 0.17         | 7540       | 1.80      | 0.73 | 0.17    | 0.27         |
| 5479       | 8.08      | 3.80  | 0.20    | 0.29         | 6884       | 13.89     | 5.20  | 0.13    | 0.19         | 7580       | 1.18      | 0.56 | 0.20    | 0.26         |
| 5480       | 12.02     | 5.33  | 0.19    | 0.39         | 7016M      | 11.84     | 4.03  | 0.13    | 0.22         | 7590       | 2.64      | 1.40 | 0.22    | 0.29         |
| 5491       | 2.22      | 1.05  | 0.20    | 0.22         | 7024M      | 13.15     | 4.48  | 0.13    | 0.22         | 7600       | 2.20      | 1.15 | 0.24    | 0.34         |
| 5506       | 7.25      | 3.26  | 0.19    | 0.33         | 7038M      | 6.18      | 2.42  | 0.16    | 0.20         | 7601       | 7.92      | 3.33 | 0.16    | 0.24         |
| 5507       | 5.63      | 2.41  | 0.17    | 0.27         | 7046M      | 8.63      | 4.88  | 0.26    | 0.28         | 7605       | 1.90      | 0.96 | 0.22    | 0.30         |
| 5508D      | 9.73      | 4.05  | 0.17    | 0.30         | 7047M      | 14.45     | 5.19  | 0.13    | 0.22         | 7610       | 0.38      | 0.21 | 0.26    | 0.36         |
| 5536       | 6.50      | 2.83  | 0.18    | 0.31         | 7050M      | 7.55      | 3.12  | 0.16    | 0.20         | 7611       | 3.35      | 1.79 | 0.24    | 0.24         |
| 5538       | 6.67      | 3.10  | 0.20    | 0.27         | 7090M      | 6.87      | 2.69  | 0.16    | 0.20         | 7612       | 14.10     | 6.47 | 0.19    | 0.23         |
| 5551       | 24.26     | 10.26 | 0.17    | 0.33         | 7098M      | 9.59      | 5.42  | 0.26    | 0.28         | 7613       | 4.37      | 2.18 | 0.22    | 0.29         |
| 5606       | 1.86      | 0.86  | 0.20    | 0.29         | 7099M      | 10.54     | 6.28  | 0.26    | 0.28         | 7704       | 5.28      | 2.98 | 0.27    | 0.33         |
| 5610       | 5.00      | 2.71  | 0.24    | 0.36         | 7133       | 3.37      | 1.51  | 0.19    | 0.27         | 7720       | 1.53      | 0.91 | 0.28    | 0.28         |
| 5645       | 6.99      | 3.48  | 0.23    | 0.37         | 7151M      | 4.09      | 1.84  | 0.19    | 0.27         | 7855       | 7.81      | 3.46 | 0.18    | 0.24         |
| 5651       | 8.15      | 3.88  | 0.21    | 0.32         | 7152M      | 5.00      | 2.36  | 0.19    | 0.27         | 8001       | 1.45      | 0.83 | 0.25    | 0.37         |
| 5703       | 17.85     | 8.13  | 0.19    | 0.28         | 7153M      | 4.55      | 2.05  | 0.19    | 0.27         | 8002       | 1.46      | 0.93 | 0.30    | 0.30         |
| 5705       | 10.20     | 5.44  | 0.24    | 0.26         | 7222       | 4.43      | 1.93  | 0.17    | 0.23         | 8006       | 1.68      | 0.94 | 0.25    | 0.33         |
| 5951       | 0.41      | 0.22  | 0.23    | 0.27         | 7228       | 4.52      | 2.30  | 0.22    | 0.24         | 8008       | 0.66      | 0.41 | 0.28    | 0.31         |
| 6003       | 7.13      | 3.29  | 0.19    | 0.26         | 7229       | 5.40      | 2.46  | 0.19    | 0.23         | 8010       | 1.16      | 0.65 | 0.25    | 0.33         |
| 6005       | 4.62      | 2.17  | 0.19    | 0.22         | 7230       | 5.58      | 3.19  | 0.26    | 0.25         | 8013       | 0.38      | 0.22 | 0.26    | 0.32         |
| 6017       | 7.31      | 3.54  | 0.20    | 0.19         | 7231       | 4.98      | 2.54  | 0.23    | 0.30         | 8015       | 0.61      | 0.35 | 0.25    | 0.35         |
| 6018       | 3.17      | 1.33  | 0.16    | 0.21         | 7232       | 3.83      | 1.69  | 0.17    | 0.21         | 8017       | 1.13      | 0.64 | 0.25    | 0.34         |
| 6045       | 5.27      | 2.01  | 0.14    | 0.21         | 7309F      | 19.59     | 10.26 | 0.15    | 0.27         | 8018       | 2.45      | 1.39 | 0.25    | 0.32         |
| 6204       | 8.23      | 3.91  | 0.20    | 0.30         | 7313F      | 3.62      | 2.02  | 0.18    | 0.28         | 8021       | 1.81      | 1.01 | 0.24    | 0.29         |
| 6206       | 4.31      | 1.75  | 0.17    | 0.25         | 7317F      | 10.32     | 5.61  | 0.17    | 0.30         | 8027       | -         | 0.76 | 0.24    | -            |
| 6213       | 4.64      | 1.97  | 0.17    | 0.23         | 7323       | -         | 10.26 | 0.15    | -            | 8031       | 1.67      | 0.85 | 0.22    | 0.29         |
| 6214       | 4.11      | 1.74  | 0.16    | 0.19         | 7327F      | 17.80     | 8.96  | 0.13    | 0.27         | 8032       | 1.02      | 0.60 | 0.27    | 0.35         |
| 6216       | 4.97      | 2.21  | 0.18    | 0.25         | 7333M      | 4.59      | 1.67  | 0.13    | 0.16         | 8033       | 2.42      | 1.34 | 0.24    | 0.25         |
| 6217       | 3.91      | 2.02  | 0.23    | 0.29         | 7335M      | 5.10      | 1.85  | 0.13    | 0.16         | 8039       | 1.44      | 0.83 | 0.26    | 0.37         |
| 6229       | 4.52      | 2.08  | 0.18    | 0.28         | 7337M      | 5.60      | 2.14  | 0.13    | 0.16         | 8044       | 2.17      | 1.19 | 0.24    | 0.31         |
| 6233       | 7.50      | 2.88  | 0.13    | 0.17         | 7350F      | 14.72     | 8.34  | 0.19    | 0.31         | 8045       | 0.69      | 0.41 | 0.26    | 0.30         |
| 6235       | 10.19     | 4.36  | 0.17    | 0.22         | 7360       | 5.20      | 2.90  | 0.26    | 0.26         | 8046X      | 1.39      | 0.76 | 0.24    | 0.40         |
| 6236       | 22.97     | 9.57  | 0.16    | 0.23         | 7370       | 4.58      | 2.84  | 0.29    | 0.30         | 8047       | 0.84      | 0.51 | 0.28    | 0.33         |
| 6237       | 2.69      | 1.19  | 0.18    | 0.24         | 7373X      | 1.51      | 0.91  | 0.29    | 0.26         | 8050       | 0.84      | 0.48 | 0.25    | 0.29         |
| 6251DX     | 9.87      | 3.70  | 0.15    | 0.20         | 7380       | 3.74      | 1.90  | 0.22    | 0.27         | 8058       | 1.74      | 0.97 | 0.25    | 0.40         |
| 6252D      | 5.66      | 2.07  | 0.14    | 0.17         | 7382X      | 3.87      | 2.15  | 0.26    | 0.37         | 8072       | 0.60      | 0.33 | 0.24    | 0.30         |
| 6260D      | 10.37     | 3.64  | 0.13    | 0.17         | 7390       | 6.84      | 3.26  | 0.21    | 0.33         | 8102       | 1.57      | 0.85 | 0.24    | 0.33         |
| 6306       | 3.93      | 1.78  | 0.19    | 0.24         | 7394M      | 12.39     | 5.09  | 0.17    | 0.23         | 8103       | 1.80      | 1.00 | 0.25    | 0.34         |
| 6319       | 5.39      | 2.41  | 0.19    | 0.31         | 7395M      | 13.77     | 5.66  | 0.17    | 0.23         | 8105       | 3.99      | 1.85 | 0.18    | 0.25         |
| 6325       | 4.76      | 2.12  | 0.19    | 0.30         | 7398M      | 15.13     | 6.56  | 0.17    | 0.23         | 8106       | 4.22      | 2.20 | 0.24    | 0.32         |
| 6400       | 7.29      | 3.88  | 0.23    | 0.32         | 7403       | 1.73      | 1.07  | 0.29    | 0.31         | 8107       | 3.54      | 1.73 | 0.21    | 0.30         |
| 6504       | 1.96      | 1.11  | 0.25    | 0.32         | 7405N      | 0.27      | 0.13  | 0.21    | 0.28         | 8111       | 3.47      | 1.82 | 0.23    | 0.37         |
| 6702M*     | 9.49      | 4.20  | 0.18    | 0.24         | 7409       | 11.24     | 3.37  | 0.09    | 0.15         | 8116       | 1.41      | 0.73 | 0.22    | 0.30         |
| 6703M*     | 11.59     | 5.41  | 0.18    | 0.24         | 7420       | 11.33     | 3.13  | 0.07    | 0.10         | 8203       | 3.58      | 2.05 | 0.26    | 0.32         |
| 6704M*     | 10.54     | 4.67  | 0.18    | 0.24         | 7421       | 2.62      | 0.93  | 0.11    | 0.17         | 8204       | 7.96      | 4.59 | 0.27    | 0.32         |
| 6801F      | 4.31      | 2.60  | 0.22    | 0.28         | 7422       | 1.92      | 0.77  | 0.16    | 0.18         | 8209       | 2.91      | 1.65 | 0.25    | 0.33         |
| 6811       | 2.96      | 1.20  | 0.15    | 0.23         | 7423       | 1.14      | 0.57  | 0.22    | 0.25         | 8215       | 1.79      | 0.89 | 0.22    | 0.31         |
| 6824F      | 9.16      | 4.83  | 0.17    | 0.32         | 7425       | 6.24      | 1.94  | 0.11    | 0.22         | 8227       | 4.42      | 2.06 | 0.20    | 0.32         |
| 6826F      | 8.17      | 4.27  | 0.16    | 0.33         | 7431N      | 1.88      | 0.57  | 0.09    | 0.11         | 8232       | 2.78      | 1.37 | 0.22    | 0.30         |

\* Refer to the Footnotes Page for additional information on this class code.

**PURE PREMIUMS - NOT RATES**

**MARYLAND**

Pure premiums exclude all expense provisions.

**Exhibit V**

**Page S4**

*Effective November 1, 2003*

| CLASS CODE | LOSS COST | ELR  | D RATIO | EX-MED RATIO | CLASS CODE | LOSS COST | ELR  | D RATIO | EX-MED RATIO | CLASS CODE | LOSS COST | ELR | D RATIO | EX-MED RATIO |
|------------|-----------|------|---------|--------------|------------|-----------|------|---------|--------------|------------|-----------|-----|---------|--------------|
| 8233       | 7.06      | 2.99 | 0.16    | 0.21         | 9015       | 1.92      | 1.01 | 0.24    | 0.31         |            |           |     |         |              |
| 8235       | 4.18      | 2.23 | 0.23    | 0.38         | 9016       | 1.25      | 0.70 | 0.25    | 0.35         |            |           |     |         |              |
| 8263       | 4.03      | 2.29 | 0.25    | 0.29         | 9019       | 1.91      | 1.04 | 0.24    | 0.23         |            |           |     |         |              |
| 8264       | 5.37      | 2.78 | 0.22    | 0.33         | 9033       | 1.33      | 0.80 | 0.27    | 0.29         |            |           |     |         |              |
| 8265       | 9.28      | 4.15 | 0.20    | 0.42         | 9040*      | 2.29      | 1.34 | 0.27    | 0.34         |            |           |     |         |              |
| 8279       | 5.13      | 2.98 | 0.26    | 0.33         | 9052       | 1.40      | 0.85 | 0.28    | 0.31         |            |           |     |         |              |
| 8288       | 3.88      | 1.96 | 0.21    | 0.35         | 9058       | 1.31      | 0.75 | 0.26    | 0.35         |            |           |     |         |              |
| 8291       | 3.34      | 2.07 | 0.29    | 0.28         | 9059       | 1.81      | 1.13 | 0.29    | 0.31         |            |           |     |         |              |
| 8292       | 4.29      | 2.34 | 0.24    | 0.30         | 9060       | 1.48      | 0.85 | 0.26    | 0.36         |            |           |     |         |              |
| 8293       | 4.99      | 2.69 | 0.23    | 0.32         | 9061       | 1.04      | 0.61 | 0.27    | 0.35         |            |           |     |         |              |
| 8304       | 4.02      | 1.75 | 0.18    | 0.27         | 9063       | 0.56      | 0.30 | 0.25    | 0.40         |            |           |     |         |              |
| 8350       | 4.67      | 2.15 | 0.20    | 0.31         | 9077F      | 0.45      | 0.28 | 0.18    | 0.29         |            |           |     |         |              |
| 8380       | 2.09      | 1.00 | 0.21    | 0.29         | 9082       | 1.29      | 0.76 | 0.27    | 0.35         |            |           |     |         |              |
| 8381       | 1.33      | 0.76 | 0.26    | 0.33         | 9083       | 1.39      | 0.83 | 0.28    | 0.36         |            |           |     |         |              |
| 8385X      | 4.48      | 2.17 | 0.21    | 0.33         | 9084       | 1.08      | 0.60 | 0.27    | 0.32         |            |           |     |         |              |
| 8392       | 2.16      | 1.28 | 0.26    | 0.25         | 9088a      | a         | a    | a       | a            |            |           |     |         |              |
| 8393       | 1.16      | 0.58 | 0.22    | 0.28         | 9089       | 1.84      | 0.99 | 0.24    | 0.38         |            |           |     |         |              |
| 8500       | 5.67      | 2.98 | 0.24    | 0.31         | 9093       | 0.85      | 0.51 | 0.27    | 0.32         |            |           |     |         |              |
| 8601       | 0.56      | 0.26 | 0.20    | 0.33         | 9101       | 1.53      | 0.91 | 0.27    | 0.30         |            |           |     |         |              |
| 8606       | 4.18      | 1.83 | 0.17    | 0.22         | 9102       | 2.03      | 1.17 | 0.26    | 0.32         |            |           |     |         |              |
| 8709F      | 4.79      | 2.62 | 0.17    | 0.27         | 9110       | 1.70      | 1.00 | 0.28    | 0.36         |            |           |     |         |              |
| 8710       | -         | 2.34 | 0.24    | -            | 9154       | 1.18      | 0.61 | 0.23    | 0.33         |            |           |     |         |              |
| 8719       | 2.32      | 1.20 | 0.22    | 0.22         | 9156       | 1.36      | 0.70 | 0.23    | 0.53         |            |           |     |         |              |
| 8720       | 1.09      | 0.55 | 0.22    | 0.25         | 9178       | 3.01      | 1.63 | 0.24    | 0.41         |            |           |     |         |              |
| 8721       | 0.33      | 0.17 | 0.24    | 0.35         | 9179       | 1.28      | 0.55 | 0.15    | 0.15         |            |           |     |         |              |
| 8726F      | 5.46      | 2.86 | 0.16    | 0.30         | 9180       | 2.67      | 1.35 | 0.21    | 0.35         |            |           |     |         |              |
| 8734M      | 0.39      | 0.20 | 0.21    | 0.30         | 9182       | 1.11      | 0.65 | 0.27    | 0.39         |            |           |     |         |              |
| 8737M      | 0.35      | 0.18 | 0.21    | 0.30         | 9186       | 10.22     | 4.05 | 0.16    | 0.33         |            |           |     |         |              |
| 8738M      | 0.43      | 0.22 | 0.21    | 0.30         | 9220       | 4.25      | 2.53 | 0.27    | 0.34         |            |           |     |         |              |
| 8742       | 0.29      | 0.14 | 0.21    | 0.30         | 9402       | 3.99      | 1.99 | 0.22    | 0.31         |            |           |     |         |              |
| 8745       | 4.23      | 2.10 | 0.21    | 0.45         | 9403       | 4.18      | 2.16 | 0.23    | 0.29         |            |           |     |         |              |
| 8748       | 0.61      | 0.28 | 0.19    | 0.30         | 9410       | 2.29      | 1.26 | 0.24    | 0.31         |            |           |     |         |              |
| 8755       | 0.31      | 0.14 | 0.18    | 0.21         | 9501       | 2.70      | 1.42 | 0.23    | 0.33         |            |           |     |         |              |
| 8800       | 1.13      | 0.66 | 0.26    | 0.34         | 9505       | 2.37      | 1.29 | 0.23    | 0.27         |            |           |     |         |              |
| 8803       | 0.07      | 0.03 | 0.23    | 0.30         | 9516       | 1.19      | 0.66 | 0.26    | 0.28         |            |           |     |         |              |
| 8805M      | 0.20      | 0.11 | 0.24    | 0.32         | 9519       | 1.63      | 0.85 | 0.23    | 0.25         |            |           |     |         |              |
| 8810       | 0.15      | 0.08 | 0.24    | 0.32         | 9521       | 3.51      | 1.62 | 0.19    | 0.28         |            |           |     |         |              |
| 8814M      | 0.18      | 0.10 | 0.24    | 0.32         | 9522       | 1.11      | 0.65 | 0.26    | 0.28         |            |           |     |         |              |
| 8815M      | 0.22      | 0.13 | 0.24    | 0.32         | 9534       | 7.29      | 2.96 | 0.15    | 0.24         |            |           |     |         |              |
| 8820       | 0.11      | 0.06 | 0.26    | 0.27         | 9545       | -         | 3.31 | 0.18    | -            |            |           |     |         |              |
| 8824       | 2.24      | 1.39 | 0.28    | 0.30         | 9549       | -         | 3.31 | 0.18    | -            |            |           |     |         |              |
| 8825       | 0.87      | 0.52 | 0.27    | 0.35         | 9552       | -         | 3.31 | 0.18    | -            |            |           |     |         |              |
| 8826       | 1.87      | 1.09 | 0.26    | 0.32         | 9554       | 7.78      | 3.31 | 0.18    | 0.34         |            |           |     |         |              |
| 8829       | 1.73      | 1.03 | 0.27    | 0.30         | 9586       | 0.44      | 0.25 | 0.26    | 0.34         |            |           |     |         |              |
| 8831       | 1.03      | 0.57 | 0.25    | 0.44         | 9600       | 1.64      | 0.71 | 0.15    | 0.24         |            |           |     |         |              |
| 8832       | 0.21      | 0.11 | 0.24    | 0.27         | 9620       | 0.63      | 0.33 | 0.23    | 0.31         |            |           |     |         |              |
| 8833*      | 0.61      | 0.31 | 0.21    | 0.31         |            |           |      |         |              |            |           |     |         |              |
| 8835       | 2.42      | 1.28 | 0.23    | 0.32         |            |           |      |         |              |            |           |     |         |              |
| 8861       | 0.60      | 0.39 | 0.31    | 0.33         |            |           |      |         |              |            |           |     |         |              |
| 8868       | 0.23      | 0.14 | 0.27    | 0.34         |            |           |      |         |              |            |           |     |         |              |
| 8869       | 0.47      | 0.29 | 0.29    | 0.37         |            |           |      |         |              |            |           |     |         |              |
| 8871       | 0.22      | 0.14 | 0.29    | 0.31         |            |           |      |         |              |            |           |     |         |              |
| 8901       | 0.15      | 0.09 | 0.26    | 0.27         |            |           |      |         |              |            |           |     |         |              |
| 9012       | 0.56      | 0.30 | 0.24    | 0.27         |            |           |      |         |              |            |           |     |         |              |
| 9014       | 1.98      | 1.13 | 0.25    | 0.30         |            |           |      |         |              |            |           |     |         |              |

\* Refer to the Footnotes Page for additional information on this class code.

*Effective November 1, 2003*

**FOOTNOTE**

- a Pure premium for each individual risk must be obtained from NCCI Customer Service or the Rating Organization having jurisdiction.
- D Pure premium for classification already includes the specific disease loading shown in the table below. See Basic Manual Rule 3-A-7.
- E Pure premium for classification already includes the specific disease loading shown in the table below.

| Disease  |         |        | Disease  |         |        | Disease  |         |        |
|----------|---------|--------|----------|---------|--------|----------|---------|--------|
| Code No. | Loading | Symbol | Code No. | Loading | Symbol | Code No. | Loading | Symbol |
| 0059D    | 0.31    | S      | 1710E    | 0.05    | S      | 3175D    | 0.02    | S      |
| 0065D    | 0.08    | S      | 1741E    | 0.36    | S      | 4024E    | 0.03    | S      |
| 0066D    | 0.08    | S      | 1803D    | 0.37    | S      | 5508D    | 0.05    | S      |
| 0067D    | 0.08    | S      | 1852D    | 0.07    | Asb    | 6251DX   | 0.07    | S      |
| 1164E    | 0.10    | S      | 3081D    | 0.06    | S      | 6252D    | 0.05    | S      |
| 1165E    | 0.02    | S      | 3082D    | 0.09    | S      | 6260D    | 0.08    | S      |
| 1624E    | 0.04    | S      | 3085D    | 0.05    | S      |          |         |        |

Asb=Asbestos, S=Silica

- F Pure premium provides for coverage under the United States Longshore and Harbor Workers Compensation Act and its extensions.
- M Pure premium provides for coverage under Admiralty Law and Federal Employers' Liability Act (FELA).
- N This code is part of a ratable / non-ratable group shown below. The statistical non-ratable code and corresponding pure premium are applied in addition to the basic classification when determining premium.

| Class Code | Non-Ratable Element Code |
|------------|--------------------------|
| 4771       | 0771                     |
| 7405       | 7445                     |
| 7431       | 7453                     |

- P Classification is computed on a per capita basis.
- X Refer to special classification phraseology in these pages which is applicable in this state.

**\* Class Codes with Specific Footnotes**

- 1005 Pure premium includes a non-ratable disease element of \$6.06. (For coverage written separately for federal benefits only, \$1.72. For coverage written separately for state benefits only, \$4.34.)
- 1016 Pure premium includes a non-ratable disease element of \$24.25. (For coverage written separately for federal benefits only, \$6.86. For coverage written separately for state benefits only, \$17.39.) It also includes a catastrophe loading of \$0.07. Refer to the Manual of Underground Coal Mine Rules, Classifications, and Rates for the rules applicable to the use of this classification code.
- 6702 Pure premium and rating values only appropriate for laying or relaying of tracks or maintenance of way - no work on elevated railroads. Otherwise, assign appropriate construction or erection code pure premium and elr each x 1.215.
- 6703 Pure premium and rating values only appropriate for laying or relaying of tracks or maintenance of way - no work on elevated railroads. Otherwise, assign appropriate construction or erection class pure premium x 1.484 and elr x 1.565.
- 6704 Pure premium and rating values only appropriate for laying or relaying of tracks or maintenance of way - no work on elevated railroads. Otherwise, assign appropriate construction or erection class pure premium and elr each x 1.35.
- 8833 The ex-medical pure premium for this classification is \$0.42.
- 9040 The ex-medical pure premium for this classification is \$1.51.

Effective November 1, 2003

**MISCELLANEOUS VALUES**

**Basis of premium** applicable in accordance with the footnote instructions for Code 7370 --

"Taxicab Co.":

|                                |             |
|--------------------------------|-------------|
| Employee operated vehicle..... | \$54,197.00 |
| Leased or rented vehicle.....  | \$36,131.00 |

**Maximum Payroll** applicable in accordance with **Basic Manual** Rule 2-E-1 -- "Executive Officers", including members of limited liability companies, and the footnote instructions for Code 9178 -- "Athletic Team: Non-Contact Sports," Code 9179 -- "Athletic Team: Contact Sports," and Code 9186 -- "Carnival-Traveling".....

\$2,800.00

**Minimum Payroll** applicable in accordance with **Basic Manual** Rule 2-E-1 -- "Executive Officers" and members of limited liability companies.....

\$300.00

**Per Passenger Seat Surcharge** - In accordance with the footnote instructions for classification Code 7421, the surcharge is

|                                     |         |
|-------------------------------------|---------|
| maximum surcharge per aircraft..... | \$1,000 |
| per passenger seat.....             | \$100   |

**Percentage Pure Premium Reductions** - The following percentages are applicable by deductible amount and hazard group for total losses on a per claim basis:

| Total Losses      |               |      |      |      |
|-------------------|---------------|------|------|------|
| Deductible Amount | HAZARD GROUP* |      |      |      |
|                   | I             | II   | III  | IV   |
| \$500             | 2.9%          | 2.9% | 1.8% | 1.3% |
| \$1,500           | 5.7%          | 5.5% | 3.3% | 2.5% |
| \$2,500           | 7.4%          | 7.1% | 4.3% | 3.3% |

\* Percentage pure premium reductions shown are loss elimination ratios modified by a safety factor.

**Premium Determination for Partners and Sole Proprietors** in accordance with **Basic Manual** Rule 2-E-3.....

\$47,000.00

**Terrorism Risk Insurance Act** -Certified Losses (Advisory Pure Premium).....

0.03

**United States Longshore and Harbor Workers' Compensation Coverage Percentage** applicable only in connection with **Basic Manual** Rule 3-A-4.....

20%

(Multiply a Non-F classification pure premium by a factor of 1.2. This factor adjusts for the difference in state and federal benefits only.)

**Experience Rating Eligibility**

A risk is eligible for intrastate experience rating when the payrolls or other exposures developed in the last year or last two years of the experience period produced a premium of at least \$10,000. If more than two years, an average annual premium of at least \$5,000 is required. Page A-1 of the **Experience Rating Plan Manual** should be referenced for the latest approved eligibility amounts by state.

Effective November 1, 2003  
TABLE OF WEIGHTING VALUES  
APPLICABLE TO ALL POLICIES

| Expected Losses |    |         | Weighting Values | Expected Losses |          |            | Weighting Values |
|-----------------|----|---------|------------------|-----------------|----------|------------|------------------|
| 0               | -- | 1,172   | 0.04             | 661,299         | --       | 697,775    | 0.44             |
| 1,173           | -- | 4,740   | 0.05             | 697,776         | --       | 736,364    | 0.45             |
| 4,741           | -- | 8,385   | 0.06             | 736,365         | --       | 777,254    | 0.46             |
| 8,386           | -- | 12,108  | 0.07             | 777,255         | --       | 820,658    | 0.47             |
| 12,109          | -- | 15,912  | 0.08             | 820,659         | --       | 866,815    | 0.48             |
| 15,913          | -- | 26,615  | 0.09             | 866,816         | --       | 915,996    | 0.49             |
| 26,616          | -- | 39,617  | 0.10             | 915,997         | --       | 968,510    | 0.50             |
| 39,618          | -- | 51,183  | 0.11             | 968,511         | --       | 1,024,706  | 0.51             |
| 51,184          | -- | 62,444  | 0.12             | 1,024,707       | --       | 1,084,988  | 0.52             |
| 62,445          | -- | 73,706  | 0.13             | 1,084,989       | --       | 1,149,817  | 0.53             |
| 73,707          | -- | 85,108  | 0.14             | 1,149,818       | --       | 1,219,728  | 0.54             |
| 85,109          | -- | 96,725  | 0.15             | 1,219,729       | --       | 1,295,344  | 0.55             |
| 96,726          | -- | 108,610 | 0.16             | 1,295,345       | --       | 1,377,394  | 0.56             |
| 108,611         | -- | 120,804 | 0.17             | 1,377,395       | --       | 1,466,735  | 0.57             |
| 120,805         | -- | 133,338 | 0.18             | 1,466,736       | --       | 1,564,386  | 0.58             |
| 133,339         | -- | 146,243 | 0.19             | 1,564,387       | --       | 1,671,561  | 0.59             |
| 146,244         | -- | 159,545 | 0.20             | 1,671,562       | --       | 1,789,726  | 0.60             |
| 159,546         | -- | 173,274 | 0.21             | 1,789,727       | --       | 1,920,665  | 0.61             |
| 173,275         | -- | 187,456 | 0.22             | 1,920,666       | --       | 2,066,565  | 0.62             |
| 187,457         | -- | 202,119 | 0.23             | 2,066,566       | --       | 2,230,149  | 0.63             |
| 202,120         | -- | 217,293 | 0.24             | 2,230,150       | --       | 2,414,839  | 0.64             |
| 217,294         | -- | 233,008 | 0.25             | 2,414,840       | --       | 2,625,001  | 0.65             |
| 233,009         | -- | 249,298 | 0.26             | 2,625,002       | --       | 2,866,296  | 0.66             |
| 249,299         | -- | 266,196 | 0.27             | 2,866,297       | --       | 3,146,196  | 0.67             |
| 266,197         | -- | 283,741 | 0.28             | 3,146,197       | --       | 3,474,772  | 0.68             |
| 283,742         | -- | 301,971 | 0.29             | 3,474,773       | --       | 3,865,932  | 0.69             |
| 301,972         | -- | 320,929 | 0.30             | 3,865,933       | --       | 4,339,440  | 0.70             |
| 320,930         | -- | 340,662 | 0.31             | 4,339,441       | --       | 4,924,358  | 0.71             |
| 340,663         | -- | 361,219 | 0.32             | 4,924,359       | --       | 5,665,252  | 0.72             |
| 361,220         | -- | 382,653 | 0.33             | 5,665,253       | --       | 6,634,110  | 0.73             |
| 382,654         | -- | 405,024 | 0.34             | 6,634,111       | --       | 7,955,277  | 0.74             |
| 405,025         | -- | 428,396 | 0.35             | 7,955,278       | --       | 9,863,625  | 0.75             |
| 428,397         | -- | 452,837 | 0.36             | 9,863,626       | --       | 12,862,453 | 0.76             |
| 452,838         | -- | 478,423 | 0.37             | 12,862,454      | --       | 18,260,337 | 0.77             |
| 478,424         | -- | 505,239 | 0.38             | 18,260,338      | --       | 30,855,390 | 0.78             |
| 505,240         | -- | 533,374 | 0.39             | 30,855,391      | --       | 93,830,621 | 0.79             |
| 533,375         | -- | 562,931 | 0.40             | 93,830,622      | AND OVER |            | 0.80             |
| 562,932         | -- | 594,020 | 0.41             |                 |          |            |                  |
| 594,021         | -- | 626,763 | 0.42             |                 |          |            |                  |
| 626,764         | -- | 661,298 | 0.43             |                 |          |            |                  |

|  |           |
|--|-----------|
| (a) State Per Claim Accident Limitation . . . . .  | \$140,000 |
| (b) State Multiple Claim Accident Limitation . . . . .   | \$280,000 |
| (c) USL&HW Per Claim Accident Limitation . . . . .   | \$305,500 |
| (d) USL&HW Multiple Claim Accident Limitation . . . . .  | \$611,000 |
| (e) Employers Liability Accident Limitation . . . . .  | \$55,000  |
| (f) USL&HW Act -- Expected Loss Factor -- Non-F Classes . . . . .                                  | 1.32      |
| <i>(Multiply a Non-F classification ELR by the USL&amp;HW Act - Expected Loss Factor of 1.32.)</i> |           |

Cap on Modifications = 1 + (0.00005)((Expected Losses) + (2)(Expected Losses)/(5.60))

Effective November 1, 2003  
TABLE OF BALLAST VALUES  
APPLICABLE TO ALL POLICIES

| Expected Losses    | Ballast Values | Expected Losses        | Ballast Values | Expected Losses        | Ballast Values |
|--------------------|----------------|------------------------|----------------|------------------------|----------------|
| 0 -- 30,121        | 14,000         | 966,566 -- 994,549     | 112,000        | 1,946,282 -- 1,974,277 | 210,000        |
| 30,122 -- 51,841   | 16,800         | 994,550 -- 1,022,534   | 114,800        | 1,974,278 -- 2,002,273 | 212,800        |
| 51,842 -- 76,798   | 19,600         | 1,022,535 -- 1,050,520 | 117,600        | 2,002,274 -- 2,030,269 | 215,600        |
| 76,799 -- 103,126  | 22,400         | 1,050,521 -- 1,078,507 | 120,400        | 2,030,270 -- 2,058,266 | 218,400        |
| 103,127 -- 130,095 | 25,200         | 1,078,508 -- 1,106,494 | 123,200        | 2,058,267 -- 2,086,262 | 221,200        |
| 130,096 -- 157,401 | 28,000         | 1,106,495 -- 1,134,482 | 126,000        | 2,086,263 -- 2,114,259 | 224,000        |
| 157,402 -- 184,906 | 30,800         | 1,134,483 -- 1,162,470 | 128,800        | 2,114,260 -- 2,142,255 | 226,800        |
| 184,907 -- 212,535 | 33,600         | 1,162,471 -- 1,190,459 | 131,600        | 2,142,256 -- 2,170,252 | 229,600        |
| 212,536 -- 240,247 | 36,400         | 1,190,460 -- 1,218,448 | 134,400        | 2,170,253 -- 2,198,249 | 232,400        |
| 240,248 -- 268,018 | 39,200         | 1,218,449 -- 1,246,438 | 137,200        | 2,198,250 -- 2,226,246 | 235,200        |
| 268,019 -- 295,830 | 42,000         | 1,246,439 -- 1,274,429 | 140,000        | 2,226,247 -- 2,254,243 | 238,000        |
| 295,831 -- 323,675 | 44,800         | 1,274,430 -- 1,302,420 | 142,800        | 2,254,244 -- 2,282,240 | 240,800        |
| 323,676 -- 351,543 | 47,600         | 1,302,421 -- 1,330,411 | 145,600        | 2,282,241 -- 2,310,237 | 243,600        |
| 351,544 -- 379,431 | 50,400         | 1,330,412 -- 1,358,402 | 148,400        | 2,310,238 -- 2,338,234 | 246,400        |
| 379,432 -- 407,334 | 53,200         | 1,358,403 -- 1,386,394 | 151,200        | 2,338,235 -- 2,366,231 | 249,200        |
| 407,335 -- 435,249 | 56,000         | 1,386,395 -- 1,414,386 | 154,000        | 2,366,232 -- 2,394,228 | 252,000        |
| 435,250 -- 463,174 | 58,800         | 1,414,387 -- 1,442,379 | 156,800        | 2,394,229 -- 2,422,226 | 254,800        |
| 463,175 -- 491,108 | 61,600         | 1,442,380 -- 1,470,372 | 159,600        | 2,422,227 -- 2,450,223 | 257,600        |
| 491,109 -- 519,049 | 64,400         | 1,470,373 -- 1,498,365 | 162,400        | 2,450,224 -- 2,478,221 | 260,400        |
| 519,050 -- 546,996 | 67,200         | 1,498,366 -- 1,526,358 | 165,200        | 2,478,222 -- 2,506,218 | 263,200        |
| 546,997 -- 574,948 | 70,000         | 1,526,359 -- 1,554,352 | 168,000        | 2,506,219 -- 2,534,216 | 266,000        |
| 574,949 -- 602,904 | 72,800         | 1,554,353 -- 1,582,345 | 170,800        | 2,534,217 -- 2,562,213 | 268,800        |
| 602,905 -- 630,864 | 75,600         | 1,582,346 -- 1,610,339 | 173,600        | 2,562,214 -- 2,590,211 | 271,600        |
| 630,865 -- 658,828 | 78,400         | 1,610,340 -- 1,638,334 | 176,400        | 2,590,212 -- 2,618,209 | 274,400        |
| 658,829 -- 686,794 | 81,200         | 1,638,335 -- 1,666,328 | 179,200        | 2,618,210 -- 2,646,207 | 277,200        |
| 686,795 -- 714,763 | 84,000         | 1,666,329 -- 1,694,323 | 182,000        | 2,646,208 -- 2,674,000 | 280,000        |
| 714,764 -- 742,735 | 86,800         | 1,694,324 -- 1,722,317 | 184,800        |                        |                |
| 742,736 -- 770,708 | 89,600         | 1,722,318 -- 1,750,312 | 187,600        |                        |                |
| 770,709 -- 798,683 | 92,400         | 1,750,313 -- 1,778,307 | 190,400        |                        |                |
| 798,684 -- 826,660 | 95,200         | 1,778,308 -- 1,806,303 | 193,200        |                        |                |
| 826,661 -- 854,639 | 98,000         | 1,806,304 -- 1,834,298 | 196,000        |                        |                |
| 854,640 -- 882,619 | 100,800        | 1,834,299 -- 1,862,294 | 198,800        |                        |                |
| 882,620 -- 910,600 | 103,600        | 1,862,295 -- 1,890,289 | 201,600        |                        |                |
| 910,601 -- 938,582 | 106,400        | 1,890,290 -- 1,918,285 | 204,400        |                        |                |
| 938,583 -- 966,565 | 109,200        | 1,918,286 -- 1,946,281 | 207,200        |                        |                |

For Expected Losses greater than \$2,674,000, the Ballast Value can be calculated using the following formula (rounded to the nearest 1):

$$\text{Ballast} = (0.10)(\text{Expected Losses}) + 2500(\text{Expected Losses})/(5.60) / (\text{Expected Losses} + (700)/(5.60))$$

$$\text{Cap on Modifications} = 1 + (0.00005)((\text{Expected Losses}) + (2)(\text{Expected Losses})/(5.60))$$



# Coal Miners Experience Rating Plan

Table III - Table of W and B Values  
 State Average D & P.T. Value: 437000

Maryland

11/01/03

Exhibit V

| Expected Losses |    |           | W    | B       | Expected Losses |    |           | W    | B       |
|-----------------|----|-----------|------|---------|-----------------|----|-----------|------|---------|
| 0               | -- | 25,000    | 0.00 | 41,250  | 2,262,675       | -- | 2,306,124 | 0.52 | 941,635 |
| 25,001          | -- | 90,174    | 0.01 | 77,401  | 2,306,125       | -- | 2,349,574 | 0.53 | 939,376 |
| 90,175          | -- | 133,624   | 0.02 | 112,813 | 2,349,575       | -- | 2,393,024 | 0.54 | 936,378 |
| 133,625         | -- | 177,074   | 0.03 | 147,486 | 2,393,025       | -- | 2,436,474 | 0.55 | 932,642 |
| 177,075         | -- | 220,524   | 0.04 | 181,421 | 2,436,475       | -- | 2,479,924 | 0.56 | 928,167 |
| 220,525         | -- | 263,974   | 0.05 | 214,617 | 2,479,925       | -- | 2,523,374 | 0.57 | 922,953 |
| 263,975         | -- | 307,424   | 0.06 | 247,074 | 2,523,375       | -- | 2,566,824 | 0.58 | 917,001 |
| 307,425         | -- | 350,874   | 0.07 | 278,793 | 2,566,825       | -- | 2,610,274 | 0.59 | 910,310 |
| 350,875         | -- | 394,324   | 0.08 | 309,773 | 2,610,275       | -- | 2,653,724 | 0.60 | 902,880 |
| 394,325         | -- | 437,774   | 0.09 | 340,015 | 2,653,725       | -- | 2,697,174 | 0.61 | 894,712 |
| 437,775         | -- | 481,224   | 0.10 | 369,518 | 2,697,175       | -- | 2,740,624 | 0.62 | 885,805 |
| 481,225         | -- | 524,674   | 0.11 | 398,282 | 2,740,625       | -- | 2,784,074 | 0.63 | 876,159 |
| 524,675         | -- | 568,124   | 0.12 | 426,307 | 2,784,075       | -- | 2,827,524 | 0.64 | 865,775 |
| 568,125         | -- | 611,574   | 0.13 | 453,594 | 2,827,525       | -- | 2,870,974 | 0.65 | 854,652 |
| 611,575         | -- | 655,024   | 0.14 | 480,142 | 2,870,975       | -- | 2,914,424 | 0.66 | 842,790 |
| 655,025         | -- | 698,474   | 0.15 | 505,952 | 2,914,425       | -- | 2,957,874 | 0.67 | 830,190 |
| 698,475         | -- | 741,924   | 0.16 | 531,023 | 2,957,875       | -- | 3,001,324 | 0.68 | 816,851 |
| 741,925         | -- | 785,374   | 0.17 | 555,355 | 3,001,325       | -- | 3,044,774 | 0.69 | 802,774 |
| 785,375         | -- | 828,824   | 0.18 | 578,949 | 3,044,775       | -- | 3,088,224 | 0.70 | 787,958 |
| 828,825         | -- | 872,274   | 0.19 | 601,804 | 3,088,225       | -- | 3,131,674 | 0.71 | 772,403 |
| 872,275         | -- | 915,724   | 0.20 | 623,920 | 3,131,675       | -- | 3,175,124 | 0.72 | 756,109 |
| 915,725         | -- | 959,174   | 0.21 | 645,298 | 3,175,125       | -- | 3,218,574 | 0.73 | 739,077 |
| 959,175         | -- | 1,002,624 | 0.22 | 665,937 | 3,218,575       | -- | 3,262,024 | 0.74 | 721,306 |
| 1,002,625       | -- | 1,046,074 | 0.23 | 685,837 | 3,262,025       | -- | 3,305,474 | 0.75 | 702,797 |
| 1,046,075       | -- | 1,089,524 | 0.24 | 704,999 | 3,305,475       | -- | 3,348,924 | 0.76 | 683,549 |
| 1,089,525       | -- | 1,132,974 | 0.25 | 723,422 | 3,348,925       | -- | 3,392,374 | 0.77 | 663,562 |
| 1,132,975       | -- | 1,176,424 | 0.26 | 741,106 | 3,392,375       | -- | 3,435,824 | 0.78 | 642,837 |
| 1,176,425       | -- | 1,219,874 | 0.27 | 758,052 | 3,435,825       | -- | 3,479,274 | 0.79 | 621,373 |
| 1,219,875       | -- | 1,263,324 | 0.28 | 774,259 | 3,479,275       | -- | 3,522,724 | 0.80 | 599,170 |
| 1,263,325       | -- | 1,306,774 | 0.29 | 789,728 | 3,522,725       | -- | 3,566,174 | 0.81 | 576,229 |
| 1,306,775       | -- | 1,350,224 | 0.30 | 804,458 | 3,566,175       | -- | 3,609,624 | 0.82 | 552,549 |
| 1,350,225       | -- | 1,393,674 | 0.31 | 818,449 | 3,609,625       | -- | 3,653,074 | 0.83 | 528,130 |
| 1,393,675       | -- | 1,437,124 | 0.32 | 831,701 | 3,653,075       | -- | 3,696,524 | 0.84 | 502,973 |
| 1,437,125       | -- | 1,480,574 | 0.33 | 844,215 | 3,696,525       | -- | 3,739,974 | 0.85 | 477,077 |
| 1,480,575       | -- | 1,524,024 | 0.34 | 855,990 | 3,739,975       | -- | 3,783,424 | 0.86 | 450,442 |
| 1,524,025       | -- | 1,567,474 | 0.35 | 867,027 | 3,783,425       | -- | 3,826,874 | 0.87 | 423,069 |
| 1,567,475       | -- | 1,610,924 | 0.36 | 877,325 | 3,826,875       | -- | 3,870,324 | 0.88 | 394,957 |
| 1,610,925       | -- | 1,654,374 | 0.37 | 886,884 | 3,870,325       | -- | 3,913,774 | 0.89 | 366,107 |
| 1,654,375       | -- | 1,697,824 | 0.38 | 895,705 | 3,913,775       | -- | 3,957,224 | 0.90 | 336,518 |
| 1,697,825       | -- | 1,741,274 | 0.39 | 903,787 | 3,957,225       | -- | 4,000,674 | 0.91 | 306,190 |
| 1,741,275       | -- | 1,784,724 | 0.40 | 911,130 | 4,000,675       | -- | 4,044,124 | 0.92 | 275,123 |
| 1,784,725       | -- | 1,828,174 | 0.41 | 917,735 | 4,044,125       | -- | 4,087,574 | 0.93 | 243,318 |
| 1,828,175       | -- | 1,871,624 | 0.42 | 923,601 | 4,087,575       | -- | 4,131,024 | 0.94 | 210,774 |
| 1,871,625       | -- | 1,915,074 | 0.43 | 928,728 | 4,131,025       | -- | 4,174,474 | 0.95 | 177,492 |
| 1,915,075       | -- | 1,958,524 | 0.44 | 933,117 | 4,174,475       | -- | 4,217,924 | 0.96 | 143,471 |
| 1,958,525       | -- | 2,001,974 | 0.45 | 936,767 | 4,217,925       | -- | 4,261,374 | 0.97 | 108,711 |
| 2,001,975       | -- | 2,045,424 | 0.46 | 939,678 | 4,261,375       | -- | 4,304,824 | 0.98 | 73,213  |
| 2,045,425       | -- | 2,088,874 | 0.47 | 941,851 | 4,304,825       | -- | 4,369,999 | 0.99 | 36,976  |
| 2,088,875       | -- | 2,132,324 | 0.48 | 943,285 | 4,370,000       | -- | OVER      | 1.00 | 0       |
| 2,132,325       | -- | 2,175,774 | 0.49 | 943,981 |                 |    |           |      |         |
| 2,175,775       | -- | 2,219,224 | 0.50 | 943,938 |                 |    |           |      |         |
| 2,219,225       | -- | 2,262,674 | 0.51 | 943,156 |                 |    |           |      |         |

**RETROSPECTIVE RATING PLAN MANUAL  
STATE SPECIAL RATING VALUES**

*Effective November 1, 2003*

**1. Hazard Group Differentials**

| <u>I</u> | <u>II</u> | <u>III</u> | <u>IV</u> |
|----------|-----------|------------|-----------|
| 1.47     | 1.33      | 0.83       | 0.57      |
| 1.34     | 1.20      | 0.74       | 0.50 **   |

**2. 2001 Table of Expected Loss Ranges**

Effective July 1, 2001

**2003 Table of Expected Loss Ranges\*\***

Effective December 1, 2003

**3. Excess Loss Pure Premium Factors**

(Applicable to New and Renewal Policies)

| <u>Per Accident<br/>Limitation</u> | <u>Hazard Groups</u> |           |            |           |
|------------------------------------|----------------------|-----------|------------|-----------|
|                                    | <u>I</u>             | <u>II</u> | <u>III</u> | <u>IV</u> |
| \$25,000                           | 0.621                | 0.646     | 0.764      | 0.821     |
| \$30,000                           | 0.589                | 0.615     | 0.739      | 0.801*    |
| \$35,000                           | 0.562                | 0.589     | 0.717      | 0.788     |
| \$40,000                           | 0.538                | 0.568     | 0.697      | 0.771*    |
| \$50,000                           | 0.497                | 0.532     | 0.671      | 0.741*    |
| \$75,000                           | 0.436                | 0.473     | 0.611      | 0.695     |
| \$100,000                          | 0.397                | 0.436     | 0.572      | 0.653*    |
| \$125,000                          | 0.368                | 0.406     | 0.540      | 0.618     |
| \$150,000                          | 0.341                | 0.380     | 0.513      | 0.588     |
| \$175,000                          | 0.321                | 0.359     | 0.488      | 0.560     |
| \$200,000                          | 0.305                | 0.339     | 0.462      | 0.534     |
| \$250,000                          | 0.273                | 0.309     | 0.424      | 0.495     |
| \$300,000                          | 0.248                | 0.282     | 0.389      | 0.455     |
| \$500,000                          | 0.189                | 0.215     | 0.300      | 0.353     |
| \$1,000,000                        | 0.127                | 0.144     | 0.200      | 0.234     |
| \$2,000,000                        | 0.084                | 0.095     | 0.131      | 0.153     |
| \$5,000,000                        | 0.049                | 0.056     | 0.076      | 0.089     |

\* Also applicable to Underground Coal Mine classifications.

**4. Retrospective Pure Premium Development Factors**

| <u>With Loss Limit</u> |             |             | <u>Without Loss Limit</u> |             |             | 4th & Subsequent<br><u>Adjustment</u> |
|------------------------|-------------|-------------|---------------------------|-------------|-------------|---------------------------------------|
| 1st                    | 2nd         | 3rd         | 1st                       | 2nd         | 3rd         |                                       |
| <u>Adj.</u>            | <u>Adj.</u> | <u>Adj.</u> | <u>Adj.</u>               | <u>Adj.</u> | <u>Adj.</u> |                                       |
| 0.13                   | 0.11        | 0.11        | 0.37                      | 0.31        | 0.30        | 0.00                                  |

**5. State Special Classifications by Hazard Group**

| <u>Code No.</u> | <u>HG</u> | <u>Code No.</u> | <u>HG</u> | <u>Code No.</u> | <u>HG</u> | <u>Code No.</u> | <u>HG</u> |
|-----------------|-----------|-----------------|-----------|-----------------|-----------|-----------------|-----------|
| 2791            | I         | 4417            | II        | 4536            | IV        | 7373            | III       |
| 3075            | II        | 4479            | I         | 4584            | III       |                 |           |

\*\* Effective December 1, 2003.



## Maryland

### NCCI KEY CONTACTS

Lori Lovgren  
Regulatory Services Division  
National Council on Compensation Insurance, Inc. (NCCI)  
901 Peninsula Corporate Circle, Boca Raton FL 33487  
Phone: 561-893-3337

Robert Moss  
Associate Actuary, ACAS, MAAA, ARe  
Actuarial & Economics Services  
National Council on Compensation Insurance, Inc. (NCCI)  
5 Marine View Plaza, Hoboken NJ 07030  
Phone: 201-386-2614  
Fax: 201-222-8880

All NCCI employees can be contacted via e-mail using the following format:

First Name\_Last Name@ncci.com



## MARYLAND

### APPENDIX

#### NCCI AFFILIATE LIST – MARYLAND

ACADIA INSURANCE COMPANY  
ACCIDENT FUND INS CO OF AMERICA  
ACE AMERICAN INSURANCE COMPANY  
ACE FIRE UNDERWRITERS INSURANCE COMPANY  
ACE INDEMNITY INSURANCE COMPANY  
ACE PROPERTY & CASUALTY INSURANCE COMPANY  
ACIG INS CO  
ADMIRAL INDEMNITY COMPANY  
AIU INS CO  
ALEA NORTH AMERICA INS CO  
ALLIANZ INS CO  
AMERICAN ALTERNATIVE INSURANCE CORPORATION  
AMERICAN AND FOREIGN INS CO  
AMERICAN AUTOMOBILE INSURANCE CO  
AMERICAN CASUALTY COMPANY OF READING P A  
AMERICAN CENTRAL INSURANCE COMPANY  
AMERICAN ECONOMY INS CO  
AMERICAN EMPLOYERS INSURANCE CO  
AMERICAN FIRE AND CASUALTY CO  
AMERICAN GUARANTEE AND LIABILITY INS CO  
AMERICAN HARDWARE MUTUAL INS CO  
AMERICAN HOME ASSURANCE CO  
AMERICAN INS CO  
AMERICAN INTERNATIONAL SOUTH INS CO  
AMERICAN INTERSTATE INS CO  
AMERICAN MANUFACTURERS MUTUAL INS CO  
AMERICAN MINING INS CO  
AMERICAN MOTORISTS INS CO  
AMERICAN PHYSICIANS ASSURANCE CORP  
AMERICAN PROTECTION INS CO  
AMERICAN SAFETY CASUALTY INS CO  
AMERICAN STATES INS CO (A SAFECO COMPANY)  
AMERICAN ZURICH INS CO  
AMERISURE INS CO  
AMERISURE INS CO  
AMERISURE MUTUAL INS CO  
AMERISURE MUTUAL INS CO  
AMGUARD INS CO  
ARCH INS CO  
ARGONAUT INS CO  
ARGONAUT MIDWEST INS CO  
ASSOCIATED INDEMNITY CORP  
ASSURANCE COMPANY OF AMERICA  
ATLANTIC INS CO  
ATLANTIC MUTUAL INS CO  
ATLANTIC STATES INS CO



## MARYLAND

### APPENDIX

#### NCCI AFFILIATE LIST – MARYLAND

AVEMCO INS CO  
BANCINSURE INC  
BANKERS STANDARD INS CO  
BERKLEY INS CO OF THE CAROLINAS  
BIRMINGHAM FIRE INS CO OF PA  
BITUMINOUS CASUALTY CORP  
BITUMINOUS FIRE AND MARINE INS CO  
BLUE RIDGE INDEMNITY COMPANY  
BLUE RIDGE INSURANCE CO  
BRETHREN MUTUAL INS CO  
BROTHERHOOD MUTUAL INS CO  
CA INDEMNITY INS CO  
CAMDEN FIRE INS ASSN  
CAPITAL CITY INS CO  
CENTENNIAL INS CO  
CENTRE INSURANCE COMPANY  
CHARTER OAK FIRE INS CO  
CHUBB INDEMNITY INS CO  
CHURCH MUTUAL INS CO  
CINCINNATI CASUALTY COMPANY  
CINCINNATI INDEMNITY COMPANY  
CINCINNATI INS CO  
CLARENDON NATIONAL INS CO  
CLARENDON NATIONAL INS CO  
COLOGNE REINSURANCE CO OF AMERICA  
COLONIAL AMERICAN CASUALTY & SURETY CO  
COLONY SPECIALTY INS CO  
COMMERCE AND INDUSTRY INS CO  
COMMERCIAL CASUALTY INS CO  
COMPANION COMMERCIAL INS CO  
COMPANION PROPERTY AND CASUALTY INS CO  
CONNECTICUT INDEMNITY COMPANY  
CONTINENTAL CASUALTY CO  
CONTINENTAL INS CO  
CONVERIUM INS (NORTH AMERICA) INC  
CRUM AND FORSTER INDEMNITY CO  
CUMIS INS SOCIETY INC  
DAIMLERCHRYSLER INS CO  
DISCOVER PROPERTY & CASUALTY INS CO  
DONEGAL MUTUAL INS CO  
EAGLE PACIFIC INS CO  
EASTERN ALLIANCE INSURANCE COMPANY  
EASTGUARD INS CO  
ELECTRIC INS CO  
EMCASCO INS CO  
EMPLOYEE BENEFITS INS CO  
EMPLOYERS FIRE INSURANCE COMPANY



## MARYLAND

### APPENDIX

#### NCCI AFFILIATE LIST – MARYLAND

EMPLOYERS INS OF WAUSAU  
EMPLOYERS MUTUAL CASUALTY CO  
ERIE INS CO  
ERIE INS EXCHANGE  
ERIE INS PROPERTY AND CASUALTY CO  
EVEREST NATIONAL INS CO  
EVEREST REINSURANCE CO (DIRECT)  
EXCELSIOR INSURANCE COMPANY  
FAIRFIELD INS CO  
FAIRMONT INS CO  
FARMERS CASUALTY INS CO  
FARMLAND MUTUAL INS CO  
FEDERAL INS CO  
FEDERATED MUTUAL INS CO  
FEDERATED RURAL ELECTRIC INS EXCHANGE  
FIDELITY & DEPOSIT COMPANY OF MARYLAND  
FIDELITY & GUARANTY INS UNDERWRITERS  
FIDELITY & GUARANTY INSURANCE CO  
FIRE & CASUALTY INSURANCE CO OF CONNECTICUT  
FIREMANS FUND INS CO  
FIREMANS FUND INS CO OF WI  
FIREMENS INS CO OF WASHINGTON DC  
FIRST LIBERTY INS CORP  
FIRST NATIONAL INS CO OF AMERICA  
FIRST NONPROFIT INS CO  
FIRSTLINE NATIONAL INSURANCE COMPANY  
FLAGSHIP CITY INS CO  
FLORISTS INS CO  
FLORISTS MUTUAL INS CO  
GENERAL CASUALTY COMPANY OF WISCONSIN  
GENERAL INS CO OF AMERICA  
GENERAL REINSURANCE CORP  
GENESIS INS CO  
GLOBE INDEMNITY CO  
GRANITE STATE INSURANCE COMPANY  
GRAPHIC ARTS MUTUAL INS CO  
GREAT AMERICAN ALLIANCE INS CO  
GREAT AMERICAN ASSURANCE COMPANY  
GREAT AMERICAN INS CO  
GREAT AMERICAN INS CO OF NY  
GREAT NORTHERN INS CO  
GREAT WEST CASUALTY COMPANY  
GREATER NY MUTUAL INS CO  
GREENWICH INS CO  
GROCERS INSURANCE COMPANY  
GUARANTEE INS CO  
GUIDEONE MUTUAL INS CO

## MARYLAND

### APPENDIX

#### NCCI AFFILIATE LIST – MARYLAND

GUIDEONE SPECIALTY MUTUAL INS CO  
GULF INS CO  
HANOVER AMERICAN INS CO  
HANOVER INS CO  
HARBOR SPECIALTY INS CO  
HARCO NATIONAL INS CO  
HARFORD MUTUAL INS CO  
HARLEYSVILLE INSURANCE COMPANY  
HARLEYSVILLE MUTUAL INS CO  
HARLEYSVILLE PREFERRED INSURANCE CO  
HARTFORD ACCIDENT AND INDEMNITY CO  
HARTFORD CASUALTY INS CO  
HARTFORD FIRE INS CO  
HARTFORD INS CO OF IL  
HARTFORD INS CO OF MIDWEST  
HARTFORD INS CO OF THE SOUTHEAST  
HARTFORD UNDERWRITERS INS CO  
HIGHMARK CASUALTY INSURANCE COMPANY  
ILLINOIS NATIONAL INSURANCE COMPANY  
IN LUMBERMENS MUTUAL INS CO  
INDEMNITY INS CO OF N AMERICA (CT GENERAL) (ACE)  
INS CO OF GREATER NY  
INS CO OF NORTH AMERICA  
INS CO OF THE AMERICAS  
INS CO OF THE STATE PA  
INS CORP OF AMERICA  
INSURANCE COMPANY OF OHIO  
INTL BUSINESS & MERCANTILE REASSURANCE  
KEMPER CASUALTY INSURANCE COMPANY  
KEMPER EMPLOYERS INSURANCE CO  
LIBERTY INS CORP  
LIBERTY MUTUAL FIRE INS CO  
LIBERTY MUTUAL INS CO  
LINCOLN GENERAL INS CO  
LM INS CORP  
LUMBERMEN'S UNDERWRITING ALLIANCE  
LUMBERMENS MUTUAL CASUALTY CO  
MA BAY INS CO  
MANUFACTURERS ALLIANCE INS CO  
MARYLAND CASUALTY COMPANY  
MERCHANTS INSURANCE CO OF N H INC  
MERCHANTS MUTUAL INS CO  
MERIDIAN CITIZENS SECURITY INSURANCE COMPANY  
MERIDIAN SECURITY INSURANCE COMPANY  
MIDDLESEX INS CO  
MIDWEST EMPLOYERS CASUALTY CO  
MILBANK INSURANCE COMPANY



## MARYLAND

### APPENDIX

#### NCCI AFFILIATE LIST – MARYLAND

MITSUI MARINE AND FIRE INS CO OF AMERICA  
MONTGOMERY INDEMNITY COMPANY  
MONTGOMERY MUTUAL INSURANCE COMPANY  
MUTUAL BENEFIT INS CO  
NATIONAL AMERICAN INS CO  
NATIONAL FIRE INS CO OF HARTFORD  
NATIONAL GRANGE MUTUAL INS CO  
NATIONAL INTERSTATE INS CO  
NATIONAL LIABILITY & FIRE INSURANCE CO  
NATIONAL REINSURANCE CORP  
NATIONAL SURETY CORP  
NATIONAL UNION FIRE INS CO OF PITTSBURG  
NATIONWIDE AGRIBUSINESS INS CO  
NATIONWIDE MUTUAL FIRE INS CO  
NATIONWIDE MUTUAL INS CO  
NATIONWIDE PROPERTY AND CASUALTY INS CO  
NETHERLANDS INSURANCE COMPANY  
NEW HAMPSHIRE INDEMNITY COMPANY  
NEW HAMPSHIRE INSURANCE COMPANY  
NIPPONKOA INS CO LIMITED (US BRANCH)  
NORGUARD INS CO  
NORTH AMERICAN ELITE INSURANCE CO  
NORTH AMERICAN SPECIALTY INS CO  
NORTH RIVER INS CO  
NORTHERN ASSURANCE CO OF AMERICA  
NORTHERN INSURANCE CO OF N Y  
NORTHSTAR REINSURANCE CORP  
OH CASUALTY INS CO  
OH FARMERS INS CO  
OHIO SECURITY INS CO  
OLD GUARD FIRE INS CO  
OLD GUARD INSURANCE COMPANY  
OLD REPUBLIC INS CO  
ONEBEACON AMERICA INS CO  
ONEBEACON INSURANCE COMPANY  
ORISKA INS CO  
P M A CAPITAL INS CO  
PA GENERAL INS CO  
PA LUMBERMENS MUTUAL INS CO  
PA MANUFACTURERS ASSN INS CO  
PA MANUFACTURERS INDEMNITY CO  
PA NATIONAL MUTUAL CAS INS CO  
PACIFIC EMPLOYERS INS CO  
PACIFIC INDEMNITY CO  
PEERLESS INSURANCE COMPANY  
PENINSULA INS CO  
PENN MILLERS INS CO



## MARYLAND

### APPENDIX

#### NCCI AFFILIATE LIST – MARYLAND

PENN MUTUAL INS CO  
PENN MUTUAL INS CO  
PENN NATIONAL SECURITY INS CO  
PETROLEUM CASUALTY CO  
PHARMACISTS MUTUAL INS CO  
PHOENIX ASSURANCE CO OF NEW YORK  
PHOENIX INS CO  
POTOMAC INS CO OF IL  
PREFERRED PROFESSIONAL INSURANCE COMPANY  
PRINCETON INS COMPANY  
PROTECTIVE INS CO  
PROVIDENCE WA INS CO  
PUBLIC SERVICE MUTUAL INS CO  
RANGER INS CO  
RECIPROCAL OF AMERICA  
RECIPROCAL OF AMERICA  
REGENT INSURANCE COMPANY  
REPUBLIC FRANKLIN INS CO  
REPUBLIC WESTERN INS CO  
ROCKWOOD CASUALTY IN CO  
ROYAL INDEMNITY CO  
ROYAL INS CO OF AMERICA  
SAFECO INS CO OF AMERICA  
SAFECO INS CO OF IL  
SAFEGUARD INS CO  
SAFETY FIRST INS CO  
SAFETY NATIONAL CASUALTY CORP  
SECURITY INS CO OF HARTFORD  
SELECT RISK INS CO  
SELECTIVE INS CO OF AMERICA  
SELECTIVE INS CO OF SC  
SELECTIVE INS CO OF THE SOUTHEAST  
SELECTIVE WAY INS CO  
SENECA INS CO  
SENTRY INS A MUTUAL CO  
SENTRY SELECT INSURANCE COMPANY  
SOMPO JAPAN INSURANCE CO OF AMERICA  
SOUTHERN PILOT INSURANCE COMPANY  
SOUTHERN STATES INS EXCHANGE  
SPECIALTY NATIONAL INS CO  
ST PAUL FIRE AND MARINE INS CO  
ST PAUL GUARDIAN INS CO  
ST PAUL MERCURY INS CO  
ST PAUL PROTECTIVE INS CO  
STANDARD FIRE INSURANCE COMPANY  
STAR INS CO  
STATE AUTO PROPERTY AND CASUALTY INS CO

## MARYLAND

### APPENDIX

#### NCCI AFFILIATE LIST – MARYLAND

STATE AUTOMOBILE MUTUAL INS CO  
STATE FARM FIRE AND CASUALTY CO  
SUMITOMO MARINE AND FIRE INS CO LTD (US BRANCH)  
T.H.E. INSURANCE COMPANY  
TECHNOLOGY INS CO  
TIG INS CO (FAIRFAX INC)  
TIG PREMIER INS CO  
TOKIO MARINE AND FIRE INS CO  
TRANS PACIFIC INS CO  
TRANSCONTINENTAL INS CO  
TRANSGUARD INS CO OF AMERICA INC  
TRANSPORTATION INS CO  
TRAVELERS CASUALTY & SURETY  
TRAVELERS CASUALTY & SURETY CO OF AMERICA  
TRAVELERS INDEMNITY CO  
TRAVELERS INDEMNITY CO OF AMERICA  
TRAVELERS INDEMNITY CO OF CT  
TRAVELERS INDEMNITY CO OF IL  
TRAVELERS INS CO (PRE 2003)  
TRUCK INS EXCHANGE  
TWIN CITY FIRE INS CO  
ULICO CASUALTY CO  
UNION INSURANCE COMPANY  
UNITED FARM FAMILY INS CO  
UNITED STATES FIDELITY & GUARANTY CO  
UNITED WI INS CO  
UNIVERSAL UNDERWRITERS INS CO  
US FIRE INS CO  
US SPECIALTY INS CO  
UTICA MUTUAL INS CO  
VALIANT INSURANCE COMPANY  
VALLEY FORGE INS CO  
VANLINER INS CO  
VIGILANT INS CO  
VIRGINIA SURETY COMPANY INC  
WAUSAU BUSINESS INSURANCE COMPANY  
WAUSAU UNDERWRITERS INSURANCE COMPANY  
WEST AMERICAN INS CO  
WESTFIELD INS CO  
WESTPORT INS CORP  
XL SPECIALTY INS CO  
YORK INS CO  
ZENITH INS CO  
ZURICH AMERICAN INS CO  
ZURICH AMERICAN INS CO OF IL